

ภาคผนวก จ-11

ผลตรวจวิเคราะห์คุณภาพน้ำดื่ม



Accreditation No. 1031/47

Analysis / Test Report

Client : Ratchaburi Power Co., Ltd.

245 Moo 6, Tumbol Bann - Rai, Amphur Damnoen Saduak, Ratchaburi Thailand 70130

P/O :

Project Name : Environmental Testing

Project Location :

Lot ID: 22112282

Date Received : Sep 15, 2022

Date Reported : Oct 24, 2022

Report Number : 2471859-1

Page 1 of 2

| | | | | | | | |
|-------------------------|--|--|--|--|--|--|--|
| Sample Number | 22112282-1 | | | | | | |
| Sampled Date | Sep 15, 2022 11:20 AM | | | | | | |
| Sample Description | Drinking water | | | | | | |
| Location | Control Build's Pantry | | | | | | |
| Date Analysis Commenced | Sep 16, 2022 | | | | | | |
| Condition of Sample | Contained in two glass vials and five plastic bottles, sample containers comply to pretreatment - preservation standards (APHA, USEPA) | | | | | | |

| Analyte | Unit | LOD | LOQ (LOR) | Result | Guideline / Specification | Method | Testing Location |
|--------------------------------|-----------|--------|-----------|--------------|---------------------------|---|------------------|
| Metals Testing | | | | | | | |
| Aluminium | mg/L | 0.003 | 0.005 | Not Detected | ≤0.2 | Based on APHA (2017), 3125 | Bangkok |
| Arsenic | mg/L | 0.0003 | 0.0005 | Not Detected | ≤0.05 | Based on APHA (2017), 3125 | Bangkok |
| Barium | mg/L | 0.0003 | 0.0005 | 0.001 | ≤1.0 | Based on APHA (2017), 3125 | Bangkok |
| Cadmium | mg/L | 0.0003 | 0.0005 | Not Detected | ≤0.005 | Based on APHA (2017), 3125 | Bangkok |
| Chromium | mg/L | 0.0003 | 0.0005 | Not Detected | ≤0.05 | Based on APHA (2017), 3125 | Bangkok |
| Copper | mg/L | 0.0003 | 0.0005 | Not Detected | ≤1.0 | Based on APHA (2017), 3125 | Bangkok |
| Iron | mg/L | 0.003 | 0.005 | Not Detected | ≤0.3 | Based on APHA (2017), 3125 | Bangkok |
| Lead | mg/L | 0.0003 | 0.0005 | Not Detected | ≤0.05 | Based on APHA (2017), 3125 | Bangkok |
| Manganese | mg/L | 0.0003 | 0.0005 | Not Detected | ≤0.05 | Based on APHA (2017), 3125 | Bangkok |
| Mercury | mg/L | 0.0001 | 0.0005 | Not Detected | ≤0.002 | Based on US EPA, Method 1631 Revision E | Bangkok |
| Selenium | mg/L | 0.0003 | 0.0005 | Not Detected | ≤0.01 | Based on APHA (2017), 3125 | Bangkok |
| Silver | mg/L | 0.0003 | 0.0005 | Not Detected | ≤0.05 | Based on APHA (2017), 3125 | Bangkok |
| Zinc | mg/L | 0.003 | 0.005 | Not Detected | ≤5.0 | Based on APHA (2017), 3125 | Bangkok |
| Microbiological Testing | | | | | | | |
| <i>Escherichia coli</i> | in 100 mL | - | - | Not Detected | Not Detected | APHA (2017), 9221 F | Bangkok |
| <i>Salmonella spp.</i> | in 100 mL | - | - | Not Detected | Not Detected | ISO 19250 (2010) | Bangkok |
| <i>Staphylococcus aureus</i> | CFU/100mL | - | - | <1 | ≤100 | In-house method STM No. 01-054 in connection with: - APHA (2017), 9213 B - BAM (2016), Chapter 12 | Bangkok |
| Total Coliform | MPN/100mL | - | - | <1.1 | <2.2 | APHA (2017), 9221 B | Bangkok |
| Water Testing | | | | | | | |
| Alkylbenzene Sulfonate as MBAS | mg/L | 0.05 | 0.1 | Not Detected | ≤0.2 | APHA (2017), 5540 C | Bangkok |

The above results are valid only for the analyzed/tested sample(s) as indicated in this report. No part of this report or certificate may be reproduced in any form without written consent from the Laboratory. ALS Laboratory Group (Thailand) strongly recommends that this report is not reproduced except in full.

Approved by

Sawitree Noisangiam
Manager

ADDRESS 104 Phatthanakan 40, Phatthanakan Rd., Khwaeng Phatthanakan, Khet Suan Luang, Bangkok 10250 Thailand | PHONE +66 0 2760 3000 | FAX +66 0 2760 3197

ALS LABORATORY GROUP (THAILAND) CO., LTD. An ALS Limited Company

5031-21/ Environmental Sciences

www.alsglobal.com

S:\Reports_All_GL.rpt (6:20PM)

RIGHT SOLUTIONS RIGHT PARTNER



Accreditation No. 1031/47

Analysis / Test Report

Client : Ratchaburi Power Co., Ltd.

245 Moo 6, Tumbol Bann - Rai, Amphur Damnoen Saduak, Ratchaburi Thailand 70130

P/O :

Project Name : Environmental Testing

Project Location :

Lot ID: 22112282

Date Received : Sep 15, 2022

Date Reported : Oct 24, 2022

Report Number : 2471859-1

Page 2 of 2

| | |
|-------------------------|--|
| Sample Number | 22112282-1 |
| Sampled Date | Sep 15, 2022 11:20 AM |
| Sample Description | Drinking water |
| Location | Control Build's Pantry |
| Date Analysis Commenced | Sep 16, 2022 |
| Condition of Sample | Contained in two glass vials and five plastic bottles, sample containers comply to pretreatment - preservation standards (APHA, USEPA) |

| Analyte | Unit | LOD | LOQ (LOR) | Result | Guideline / Specification | Method | Testing Location |
|--|------------|--------|-----------|--------------|---------------------------|---------------------------------------|------------------|
| Water Testing | | | | | | | |
| Chloride as Cl | mg/L | 0.06 | 0.2 | 2.3 | ≤250.0 | APHA (2017), 4110 B | Bangkok |
| Color | Color unit | - | 5 | <5 | ≤20 | APHA (2017), 2120 B | Bangkok |
| Cyanide as CN | mg/L | 0.002 | 0.005 | <0.005 | ≤0.1 | Based on APHA (2017), 4500-CN (C),(E) | Bangkok |
| Fluoride as F | mg/L | 0.05 | 0.1 | Not Detected | ≤1.5 | APHA (2017), 4110 B | Bangkok |
| Nitrate as N | mg/L | 0.06 | 0.2 | Not Detected | ≤4 | APHA (2017), 4110 B | Bangkok |
| Odour | - | - | - | Odourless | Odourless | APHA (2017), 2150 B | Bangkok |
| pH at 25 degree C | - | - | - | 7.1 | 6.5-8.5 | APHA (2017), 4500-H(B) | Bangkok |
| Phenol | mg/L | 0.0005 | 0.001 | Not Detected | ≤0.001 | Based on APHA (2017), 5530 C | Bangkok |
| Sulfate | mg/L | 0.15 | 0.5 | Not Detected | ≤250.0 | APHA (2017), 4110 B | Bangkok |
| Total Hardness as CaCO ₃ | mg/L | 0.5 | 1 | 5 | ≤100 | APHA (2017), 2340 C | Bangkok |
| Total Solids Dried at 103-105 degree C | mg/L | - | 5 | 14 | ≤500 | APHA (2017), 2540 B | Bangkok |
| Turbidity | NTU | - | 0.1 | 0.20 | ≤5 | APHA (2017), 2130 B | Bangkok |

Guideline : Notification of the Ministry of Public Health No. 61 B.E. 2524 & 135 B.E. 2534 on bottled drinking water (No.2) & Pathogenic 416 B.E. 2563

Note : This Analysis test report is reissued to supersede report No.2430086-1, Date Reported : Sep 26, 2022 due to revise analytical information.

Sampled By : Teerawat Puangsuk

Remark :

- LOD : Limit of Detection
- "<" : Lower than LOQ (Limit of Quantitation) / LOR (Limit of Reporting)
- Analyte(s) marked * is/are not included in scope of Accreditation ISO/IEC 17025.
- The laboratory has been accepted as an accredited laboratory complying with the ISO/IEC 17025.

The above results are valid only for the analyzed/tested sample(s) as indicated in this report. No part of this report or certificate may be reproduced in any form without written consent from the Laboratory. ALS Laboratory Group (Thailand) strongly recommends that this report is not reproduced except in full.

Approved by

Sawitree Noisangiam
Manager

ADDRESS 104 Phatthanakan 40, Phatthanakan Rd., Khwaeng Phatthanakan, Khet Suan Luang, Bangkok 10250 Thailand | PHONE +66 0 2760 3000 | FAX +66 0 2760 3197

ALS LABORATORY GROUP (THAILAND) CO., LTD. An ALS Limited Company

5031-21/ EML

Life Sciences

www.alsglobal.com

S:\Reports\All_GL.rpt (6:20PM)

RIGHT SOLUTIONS RIGHT PARTNER



Accreditation No. 1031/47

Analysis / Test Report

Client : Ratchaburi Power Co., Ltd.

245 Moo 6, Tumbol Bann - Rai, Amphur Damnoen Saduak, Ratchaburi Thailand 70130

P/O :

Project Name : Environmental Testing

Project Location :

Lot ID: 22112282

Date Received : Sep 15, 2022

Date Reported : Oct 24, 2022

Report Number : 2471860-1

Page 1 of 2

| | |
|-------------------------|--|
| Sample Number | 22112282-2 |
| Sampled Date | Sep 15, 2022 11:35 AM |
| Sample Description | Drinking water |
| Location | Admin Build's Pantry 2 nd Fl (CRESSO) |
| Date Analysis Commenced | Sep 16, 2022 |
| Condition of Sample | Contained in two glass vials and five plastic bottles, sample containers comply to pretreatment - preservation standards (APHA, USEPA) |

| Analyte | Unit | LOD | LOQ (LOR) | Result | Guideline / Specification | Method | Testing Location |
|--------------------------------|-----------|--------|-----------|--------------|---------------------------|---|------------------|
| Metals Testing | | | | | | | |
| Aluminium | mg/L | 0.003 | 0.005 | Not Detected | ≤0.2 | Based on APHA (2017), 3125 | Bangkok |
| Arsenic | mg/L | 0.0003 | 0.0005 | Not Detected | ≤0.05 | Based on APHA (2017), 3125 | Bangkok |
| Barium | mg/L | 0.0003 | 0.0005 | <0.0005 | ≤1.0 | Based on APHA (2017), 3125 | Bangkok |
| Cadmium | mg/L | 0.0003 | 0.0005 | Not Detected | ≤0.005 | Based on APHA (2017), 3125 | Bangkok |
| Chromium | mg/L | 0.0003 | 0.0005 | Not Detected | ≤0.05 | Based on APHA (2017), 3125 | Bangkok |
| Copper | mg/L | 0.0003 | 0.0005 | Not Detected | ≤1.0 | Based on APHA (2017), 3125 | Bangkok |
| Iron | mg/L | 0.003 | 0.005 | Not Detected | ≤0.3 | Based on APHA (2017), 3125 | Bangkok |
| Lead | mg/L | 0.0003 | 0.0005 | Not Detected | ≤0.05 | Based on APHA (2017), 3125 | Bangkok |
| Manganese | mg/L | 0.0003 | 0.0005 | Not Detected | ≤0.05 | Based on APHA (2017), 3125 | Bangkok |
| Mercury | mg/L | 0.0001 | 0.0005 | Not Detected | ≤0.002 | Based on US EPA, Method 1631 Revision E | Bangkok |
| Selenium | mg/L | 0.0003 | 0.0005 | Not Detected | ≤0.01 | Based on APHA (2017), 3125 | Bangkok |
| Silver | mg/L | 0.0003 | 0.0005 | Not Detected | ≤0.05 | Based on APHA (2017), 3125 | Bangkok |
| Zinc | mg/L | 0.003 | 0.005 | <0.005 | ≤5.0 | Based on APHA (2017), 3125 | Bangkok |
| Microbiological Testing | | | | | | | |
| <i>Escherichia coli</i> | in 100 mL | - | - | Not Detected | Not Detected | APHA (2017), 9221 F | Bangkok |
| <i>Salmonella spp.</i> | in 100 mL | - | - | Not Detected | Not Detected | ISO 19250 (2010) | Bangkok |
| <i>Staphylococcus aureus</i> | CFU/100mL | - | - | <1 | ≤100 | In-house method STM No. 01-054 in connection with: - APHA (2017), 9213 B - BAM (2016), Chapter 12 | Bangkok |
| Total Coliform | MPN/100mL | - | - | <1.1 | <2.2 | APHA (2017), 9221 B | Bangkok |
| Water Testing | | | | | | | |
| Alkylbenzene Sulfonate as MBAS | mg/L | 0.05 | 0.1 | Not Detected | ≤0.2 | APHA (2017), 5540 C | Bangkok |

The above results are valid only for the analyzed/tested sample(s) as indicated in this report. No part of this report or certificate may be reproduced in any form without written consent from the Laboratory. ALS Laboratory Group (Thailand) strongly recommends that this report is not reproduced except in full.

Approved by

Sawitree N.

Sawitree Noisangiam
Manager

ADDRESS 104 Phatthanakan 40, Phatthanakan Rd., Khwaeng Phatthanakan, Khet Suan Luang, Bangkok 10250 Thailand | PHONE +66 0 2760 3000 | FAX +66 0 2760 3197

ALS LABORATORY GROUP (THAILAND) CO., LTD. An ALS Limited Company

5031-21/ EMAIL

Life Sciences

www.alsglobal.com

S:\Reports\All_GL.rpt (6:20PM)

RIGHT SOLUTIONS RIGHT PARTNER



Accreditation No. 1031/47

Analysis / Test Report

Client : Ratchaburi Power Co., Ltd.

245 Moo 6, Tumbol Bann - Rai, Amphur Damnoen Saduak, Ratchaburi Thailand 70130

P/O :

Project Name : Environmental Testing

Project Location :

Lot ID: 22112282

Date Received : Sep 15, 2022

Date Reported : Oct 24, 2022

Report Number : 2471860-1

Page 2 of 2

| | | | | | | | |
|-------------------------|--|--|--|--|--|--|--|
| Sample Number | 22112282-2 | | | | | | |
| Sampled Date | Sep 15, 2022 11:35 AM | | | | | | |
| Sample Description | Drinking water | | | | | | |
| Location | Admin Build's Pantry 2 nd Fl (CRESSO) | | | | | | |
| Date Analysis Commenced | Sep 16, 2022 | | | | | | |
| Condition of Sample | Contained in two glass vials and five plastic bottles, sample containers comply to pretreatment - preservation standards (APHA, USEPA) | | | | | | |

| Analyte | Unit | LOD | LOQ (LOR) | Result | Guideline / Specification | Method | Testing Location |
|--|------------|--------|-----------|--------------|---------------------------|---------------------------------------|------------------|
| Water Testing | | | | | | | |
| Chloride as Cl | mg/L | 0.06 | 0.2 | 1.3 | ≤250.0 | APHA (2017), 4110 B | Bangkok |
| Color | Color unit | - | 5 | <5 | ≤20 | APHA (2017), 2120 B | Bangkok |
| Cyanide as CN | mg/L | 0.002 | 0.005 | <0.005 | ≤0.1 | Based on APHA (2017), 4500-CN (C),(E) | Bangkok |
| Fluoride as F | mg/L | 0.05 | 0.1 | Not Detected | ≤1.5 | APHA (2017), 4110 B | Bangkok |
| Nitrate as N | mg/L | 0.06 | 0.2 | Not Detected | ≤4 | APHA (2017), 4110 B | Bangkok |
| Odour | - | - | - | Odourless | Odourless | APHA (2017), 2150 B | Bangkok |
| Phenol | mg/L | 0.0005 | 0.001 | Not Detected | ≤0.001 | Based on APHA (2017), 5530 C | Bangkok |
| Sulfate | mg/L | 0.15 | 0.5 | Not Detected | ≤250.0 | APHA (2017), 4110 B | Bangkok |
| Total Hardness as CaCO ₃ | mg/L | 0.5 | 1 | 2 | ≤100 | APHA (2017), 2340 C | Bangkok |
| Total Solids Dried at 103-105 degree C | mg/L | - | 5 | 9 | ≤500 | APHA (2017), 2540 B | Bangkok |
| Turbidity | NTU | - | 0.1 | 0.20 | ≤5 | APHA (2017), 2130 B | Bangkok |

Guideline : Notification of the Ministry of Public Health No. 61 B.E. 2524 & 135 B.E. 2534 on bottled drinking water (No.2) & Pathogenic 416 B.E. 2563

Note : This Analysis test report is reissued to supersede report No.2430086-1, Date Reported : Sep 26, 2022 due to revise analytical information.

Sampled By : Teerawat Puangsuk

Remark :

- LOD : Limit of Detection
- "<" : Lower than LOQ (Limit of Quantitation) / LOR (Limit of Reporting)
- Analyte(s) marked * is/are not included in scope of Accreditation ISO/IEC 17025.
- The laboratory has been accepted as an accredited laboratory complying with the ISO/IEC 17025.

The above results are valid only for the analyzed/tested sample(s) as indicated in this report. No part of this report or certificate may be reproduced in any form without written consent from the Laboratory. ALS Laboratory Group (Thailand) strongly recommends that this report is not reproduced except in full.

Approved by

Sawitree Noisangiam
Manager

ADDRESS 104 Phatthanakan 40, Phatthanakan Rd., Khwaeng Phatthanakan, Khet Suan Luang, Bangkok 10250 Thailand | PHONE +66 0 2760 3000 | FAX +66 0 2760 3197

ALS LABORATORY GROUP (THAILAND) CO., LTD. An ALS Limited Company

5031-21/ EMAIL

Life Sciences

www.alsglobal.com

S:\Reports\All_GL.rpt (6:20PM)

RIGHT SOLUTIONS RIGHT PARTNER



Accreditation No. 1031/47

Analysis / Test Report

Client : Ratchaburi Power Co., Ltd.

245 Moo 6, Tumbol Bann - Rai, Amphur Damnoen Saduak, Ratchaburi Thailand 70130

P/O :

Project Name : Environmental Testing

Project Location :

Lot ID: 22122565

Date Received : Oct 19, 2022

Date Reported : Oct 22, 2022

Report Number : 2454694-1

Page 1 of 3

| | |
|-------------------------|--|
| Sample Number | 22122565-1 |
| Sampled Date | Oct 19, 2022 12:05 PM |
| Sample Description | Drinking water |
| Location | Admin Build's Pantry 2 nd Fl (CRESSO) |
| Date Analysis Commenced | Oct 20, 2022 |
| Condition of Sample | Contained in one plastic bottle, sample containers comply to pretreatment - preservation standards (APHA, USEPA) |

| Analyte | Unit | LOD | LOQ (LOR) | Result | Guideline / Specification | Method | Testing Location |
|-------------------|------|-----|-----------|--------|---------------------------|------------------------|------------------|
| Water Testing | | | | | | | |
| pH at 25 degree C | | - | - | 8.0 | 6.5-8.5 | APHA (2017), 4500-H(B) | Bangkok |

Guideline : Notification of the Ministry of Public Health No. 61 B.E. 2524 & 135 B.E. 2534 on bottled drinking water (No.2) & Pathogenic 416 B.E. 2563

Sampled By : Norrasat Komal

Remark :

- LOD : Limit of Detection
- "<" : Lower than LOQ (Limit of Quantitation) / LOR (Limit of Reporting)
- Analyte(s) marked * is/are not included in scope of Accreditation ISO/IEC 17025.
- The laboratory has been accepted as an accredited laboratory complying with the ISO/IEC 17025.

The above results are valid only for the analyzed/tested sample(s) as indicated in this report. No part of this report or certificate may be reproduced in any form without written consent from the Laboratory. ALS Laboratory Group (Thailand) strongly recommends that this report is not reproduced except in full.

Approved by

Nanthawadee Somboon
Specialist 1

ADDRESS 104 Phatthanakan 40, Phatthanakan Rd., Khwaeng Phatthanakan, Khet Suan Luang, Bangkok 10250 Thailand | PHONE +66 0 2760 3000 | FAX +66 0 2760 3197

ALS LABORATORY GROUP (THAILAND) CO., LTD. An ALS Limited Company



Accreditation No. 1031/47

Analysis / Test Report

Client : Ratchaburi Power Co., Ltd.

245 Moo 6, Tumbol Bann - Rai, Amphur Damnoen Saduak, Ratchaburi Thailand 70130

P/O :

Project Name : Environmental Testing

Project Location :

Lot ID: 22112282

Date Received : Sep 15, 2022

Date Reported : Oct 24, 2022

Report Number : 2471861-1

Page 1 of 2

| | |
|-------------------------|--|
| Sample Number | 22112282-3 |
| Sampled Date | Sep 15, 2022 11:20 AM |
| Sample Description | Drinking water |
| Location | Admin Build's Pantry FI 1 (RPCL) |
| Date Analysis Commenced | Sep 16, 2022 |
| Condition of Sample | Contained in two glass vials and five plastic bottles, sample containers comply to pretreatment - preservation standards (APHA, USEPA) |

| Analyte | Unit | LOD | LOQ (LOR) | Result | Guideline / Specification | Method | Testing Location |
|--------------------------------|-----------|--------|-----------|--------------|---------------------------|---|------------------|
| Metals Testing | | | | | | | |
| Aluminium | mg/L | 0.003 | 0.005 | Not Detected | ≤0.2 | Based on APHA (2017), 3125 | Bangkok |
| Arsenic | mg/L | 0.0003 | 0.0005 | Not Detected | ≤0.05 | Based on APHA (2017), 3125 | Bangkok |
| Barium | mg/L | 0.0003 | 0.0005 | 0.0008 | ≤1.0 | Based on APHA (2017), 3125 | Bangkok |
| Cadmium | mg/L | 0.0003 | 0.0005 | Not Detected | ≤0.005 | Based on APHA (2017), 3125 | Bangkok |
| Chromium | mg/L | 0.0003 | 0.0005 | Not Detected | ≤0.05 | Based on APHA (2017), 3125 | Bangkok |
| Copper | mg/L | 0.0003 | 0.0005 | Not Detected | ≤1.0 | Based on APHA (2017), 3125 | Bangkok |
| Iron | mg/L | 0.003 | 0.005 | Not Detected | ≤0.3 | Based on APHA (2017), 3125 | Bangkok |
| Lead | mg/L | 0.0003 | 0.0005 | Not Detected | ≤0.05 | Based on APHA (2017), 3125 | Bangkok |
| Manganese | mg/L | 0.0003 | 0.0005 | Not Detected | ≤0.05 | Based on APHA (2017), 3125 | Bangkok |
| Mercury | mg/L | 0.0001 | 0.0005 | Not Detected | ≤0.002 | Based on US EPA, Method 1631 Revision E | Bangkok |
| Selenium | mg/L | 0.0003 | 0.0005 | Not Detected | ≤0.01 | Based on APHA (2017), 3125 | Bangkok |
| Silver | mg/L | 0.0003 | 0.0005 | Not Detected | ≤0.05 | Based on APHA (2017), 3125 | Bangkok |
| Zinc | mg/L | 0.003 | 0.005 | 0.01 | ≤5.0 | Based on APHA (2017), 3125 | Bangkok |
| Microbiological Testing | | | | | | | |
| <i>Escherichia coli</i> | in 100 mL | - | - | Not Detected | Not Detected | APHA (2017), 9221 F | Bangkok |
| <i>Salmonella spp.</i> | in 100 mL | - | - | Not Detected | Not Detected | ISO 19250 (2010) | Bangkok |
| <i>Staphylococcus aureus</i> | CFU/100mL | - | - | <1 | ≤100 | In-house method STM No. 01-054 in connection with: - APHA (2017), 9213 B - BAM (2016), Chapter 12 | Bangkok |
| Total Coliform | MPN/100mL | - | - | <1.1 | <2.2 | APHA (2017), 9221 B | Bangkok |
| Water Testing | | | | | | | |
| Alkylbenzene Sulfonate as MBAS | mg/L | 0.05 | 0.1 | Not Detected | ≤0.2 | APHA (2017), 5540 C | Bangkok |

The above results are valid only for the analyzed/tested sample(s) as indicated in this report. No part of this report or certificate may be reproduced in any form without written consent from the Laboratory. ALS Laboratory Group (Thailand) strongly recommends that this report is not reproduced except in full.

Approved by

Sawitree N.

Sawitree Noisangiam
Manager

ADDRESS 104 Phatthanakan 40, Phatthanakan Rd., Khwaeng Phatthanakan, Khet Suan Luang, Bangkok 10250 Thailand | PHONE +66 0 2760 3000 | FAX +66 0 2760 3197

ALS LABORATORY GROUP (THAILAND) CO., LTD. An ALS Limited Company

5031-21/ ENA11

Life Sciences

www.alsglobal.com

S:\Reports_All_GL.rpt (6:20PM)

RIGHT SOLUTIONS RIGHT PARTNER



Accreditation No. 1031/47

Analysis / Test Report

Client : Ratchaburi Power Co., Ltd.

245 Moo 6, Tumbol Bann - Rai, Amphur Damnoen Saduak, Ratchaburi Thailand 70130

P/O :

Project Name : Environmental Testing

Project Location :

Lot ID: 22112282

Date Received : Sep 15, 2022

Date Reported : Oct 24, 2022

Report Number : 2471861-1

Page 2 of 2

| | | | | | | | |
|-------------------------|--|--|--|--|--|--|--|
| Sample Number | 22112282-3 | | | | | | |
| Sampled Date | Sep 15, 2022 11:20 AM | | | | | | |
| Sample Description | Drinking water | | | | | | |
| Location | Admin Build's Pantry FI 1 (RPCL) | | | | | | |
| Date Analysis Commenced | Sep 16, 2022 | | | | | | |
| Condition of Sample | Contained in two glass vials and five plastic bottles, sample containers comply to pretreatment - preservation standards (APHA, USEPA) | | | | | | |

| Analyte | Unit | LOD | LOQ (LOR) | Result | Guideline / Specification | Method | Testing Location |
|--|------------|--------|-----------|--------------|---------------------------|---------------------------------------|------------------|
| Water Testing | | | | | | | |
| Chloride as Cl | mg/L | 0.06 | 0.2 | 1.4 | ≤250.0 | APHA (2017), 4110 B | Bangkok |
| Color | Color unit | - | 5 | <5 | ≤20 | APHA (2017), 2120 B | Bangkok |
| Cyanide as CN | mg/L | 0.002 | 0.005 | Not Detected | ≤0.1 | Based on APHA (2017), 4500-CN (C),(E) | Bangkok |
| Fluoride as F | mg/L | 0.05 | 0.1 | Not Detected | ≤1.5 | APHA (2017), 4110 B | Bangkok |
| Nitrate as N | mg/L | 0.06 | 0.2 | Not Detected | ≤4 | APHA (2017), 4110 B | Bangkok |
| Odour | - | - | - | Odourless | Odourless | APHA (2017), 2150 B | Bangkok |
| pH at 25 degree C | - | - | - | 7.3 | 6.5-8.5 | APHA (2017), 4500-H(B) | Bangkok |
| Phenol | mg/L | 0.0005 | 0.001 | Not Detected | ≤0.001 | Based on APHA (2017), 5530 C | Bangkok |
| Sulfate | mg/L | 0.15 | 0.5 | Not Detected | ≤250.0 | APHA (2017), 4110 B | Bangkok |
| Total Hardness as CaCO ₃ | mg/L | 0.5 | 1 | 3 | ≤100 | APHA (2017), 2340 C | Bangkok |
| Total Solids Dried at 103-105 degree C | mg/L | - | 5 | 13 | ≤500 | APHA (2017), 2540 B | Bangkok |
| Turbidity | NTU | - | 0.1 | 0.20 | ≤5 | APHA (2017), 2130 B | Bangkok |

Guideline : Notification of the Ministry of Public Health No. 61 B.E. 2524 & 135 B.E. 2534 on bottled drinking water (No.2) & Pathogenic 416 B.E. 2563

Note : This Analysis test report is reissued to supersede report No.2430086-1, Date Reported : Sep 26, 2022 due to revise analytical information.

Sampled By : Teerawat Puangsuk

Remark :

- LOD : Limit of Detection
- "<" : Lower than LOQ (Limit of Quantitation) / LOR (Limit of Reporting)
- Analyte(s) marked * is/are not included in scope of Accreditation ISO/IEC 17025.
- The laboratory has been accepted as an accredited laboratory complying with the ISO/IEC 17025.

The above results are valid only for the analyzed/tested sample(s) as indicated in this report. No part of this report or certificate may be reproduced in any form without written consent from the Laboratory. ALS Laboratory Group (Thailand) strongly recommends that this report is not reproduced except in full.

Approved by

Sawitree N.

Sawitree Noisangiam
Manager

ADDRESS 104 Phatthanakan 40, Phatthanakan Rd., Khwaeng Phatthanakan, Khet Suan Luang, Bangkok 10250 Thailand | PHONE +66 0 2760 3000 | FAX +66 0 2760 3197

ALS LABORATORY GROUP (THAILAND) CO., LTD. An ALS Limited Company

5031-21/ EMAIL

Life Sciences

www.alsglobal.com

S:\Reports\All_GL.rpt (6:20PM)

RIGHT SOLUTIONS RIGHT PARTNER



Accreditation No. 1031/47

Analysis / Test Report

Client : Ratchaburi Power Co., Ltd.

245 Moo 6, Tumbol Bann - Rai, Amphur Damnoen Saduak, Ratchaburi Thailand 70130

P/O :

Project Name : Environmental Testing

Project Location :

Lot ID: 22112282

Date Received : Sep 15, 2022

Date Reported : Oct 24, 2022

Report Number : 2471862-1

Page 1 of 2

| | |
|-------------------------|--|
| Sample Number | 22112282-4 |
| Sampled Date | Sep 15, 2022 11:30 AM |
| Sample Description | Drinking water |
| Location | Admin Build's Pantry FI 1 (RPCL) Pr. area |
| Date Analysis Commenced | Sep 16, 2022 |
| Condition of Sample | Contained in two glass vials and five plastic bottles, sample containers comply to pretreatment - preservation standards (APHA, USEPA) |

| Analyte | Unit | LOD | LOQ (LOR) | Result | Guideline / Specification | Method | Testing Location |
|--------------------------------|-----------|--------|-----------|--------------|---------------------------|---|------------------|
| Metals Testing | | | | | | | |
| Aluminium | mg/L | 0.003 | 0.005 | Not Detected | ≤0.2 | Based on APHA (2017), 3125 | Bangkok |
| Arsenic | mg/L | 0.0003 | 0.0005 | Not Detected | ≤0.05 | Based on APHA (2017), 3125 | Bangkok |
| Barium | mg/L | 0.0003 | 0.0005 | 0.0007 | ≤1.0 | Based on APHA (2017), 3125 | Bangkok |
| Cadmium | mg/L | 0.0003 | 0.0005 | Not Detected | ≤0.005 | Based on APHA (2017), 3125 | Bangkok |
| Chromium | mg/L | 0.0003 | 0.0005 | Not Detected | ≤0.05 | Based on APHA (2017), 3125 | Bangkok |
| Copper | mg/L | 0.0003 | 0.0005 | Not Detected | ≤1.0 | Based on APHA (2017), 3125 | Bangkok |
| Iron | mg/L | 0.003 | 0.005 | Not Detected | ≤0.3 | Based on APHA (2017), 3125 | Bangkok |
| Lead | mg/L | 0.0003 | 0.0005 | Not Detected | ≤0.05 | Based on APHA (2017), 3125 | Bangkok |
| Manganese | mg/L | 0.0003 | 0.0005 | Not Detected | ≤0.05 | Based on APHA (2017), 3125 | Bangkok |
| Mercury | mg/L | 0.0001 | 0.0005 | Not Detected | ≤0.002 | Based on US EPA, Method 1631 Revision E | Bangkok |
| Selenium | mg/L | 0.0003 | 0.0005 | Not Detected | ≤0.01 | Based on APHA (2017), 3125 | Bangkok |
| Silver | mg/L | 0.0003 | 0.0005 | <0.0005 | ≤0.05 | Based on APHA (2017), 3125 | Bangkok |
| Zinc | mg/L | 0.003 | 0.005 | 0.006 | ≤5.0 | Based on APHA (2017), 3125 | Bangkok |
| Microbiological Testing | | | | | | | |
| <i>Escherichia coli</i> | in 100 mL | - | - | Not Detected | Not Detected | APHA (2017), 9221 F | Bangkok |
| <i>Salmonella spp.</i> | in 100 mL | - | - | Not Detected | Not Detected | ISO 19250 (2010) | Bangkok |
| <i>Staphylococcus aureus</i> | CFU/100mL | - | - | <1 | ≤100 | In-house method STM No. 01-054 in connection with: - APHA (2017), 9213 B - BAM (2016), Chapter 12 | Bangkok |
| Total Coliform | MPN/100mL | - | - | <1.1 | <2.2 | APHA (2017), 9221 B | Bangkok |
| Water Testing | | | | | | | |
| Alkylbenzene Sulfonate as MBAS | mg/L | 0.05 | 0.1 | Not Detected | ≤0.2 | APHA (2017), 5540 C | Bangkok |

The above results are valid only for the analyzed/tested sample(s) as indicated in this report. No part of this report or certificate may be reproduced in any form without written consent from the Laboratory. ALS Laboratory Group (Thailand) strongly recommends that this report is not reproduced except in full.

Approved by

Sawitree N.

Sawitree Noisangiam
Manager

ADDRESS 104 Phatthanakan 40, Phatthanakan Rd., Khwaeng Phatthanakan, Khet Suan Luang, Bangkok 10250 Thailand | PHONE +66 0 2760 3000 | FAX +66 0 2760 3197

ALS LABORATORY GROUP (THAILAND) CO., LTD. An ALS Limited Company

5031-21/ ENA11

Life Sciences

www.alsglobal.com

S:\Reports_All_GL.rpt (6:20PM)

RIGHT SOLUTIONS RIGHT PARTNER



Accreditation No. 1031/47

Analysis / Test Report

Client : Ratchaburi Power Co., Ltd.

245 Moo 6, Tumbol Bann - Rai, Amphur Damnoen Saduak, Ratchaburi Thailand 70130

P/O :

Project Name : Environmental Testing

Project Location :

Lot ID: 22112282

Date Received : Sep 15, 2022

Date Reported : Oct 24, 2022

Report Number : 2471862-1

Page 2 of 2

| | |
|-------------------------|--|
| Sample Number | 22112282-4 |
| Sampled Date | Sep 15, 2022 11:30 AM |
| Sample Description | Drinking water |
| Location | Admin Build's Pantry FI 1 (RPCL) Pr. area |
| Date Analysis Commenced | Sep 16, 2022 |
| Condition of Sample | Contained in two glass vials and five plastic bottles, sample containers comply to pretreatment - preservation standards (APHA, USEPA) |

| Analyte | Unit | LOD | LOQ (LOR) | Result | Guideline / Specification | Method | Testing Location |
|--|------------|--------|-----------|--------------|---------------------------|---------------------------------------|------------------|
| Water Testing | | | | | | | |
| Chloride as Cl | mg/L | 0.06 | 0.2 | 1.6 | ≤250.0 | APHA (2017), 4110 B | Bangkok |
| Color | Color unit | - | 5 | <5 | ≤20 | APHA (2017), 2120 B | Bangkok |
| Cyanide as CN | mg/L | 0.002 | 0.005 | Not Detected | ≤0.1 | Based on APHA (2017), 4500-CN (C),(E) | Bangkok |
| Fluoride as F | mg/L | 0.05 | 0.1 | Not Detected | ≤1.5 | APHA (2017), 4110 B | Bangkok |
| Nitrate as N | mg/L | 0.06 | 0.2 | Not Detected | ≤4 | APHA (2017), 4110 B | Bangkok |
| Odour | - | - | - | Odourless | Odourless | APHA (2017), 2150 B | Bangkok |
| Phenol | mg/L | 0.0005 | 0.001 | Not Detected | ≤0.001 | Based on APHA (2017), 5530 C | Bangkok |
| Sulfate | mg/L | 0.15 | 0.5 | Not Detected | ≤250.0 | APHA (2017), 4110 B | Bangkok |
| Total Hardness as CaCO ₃ | mg/L | 0.5 | 1 | 3 | ≤100 | APHA (2017), 2340 C | Bangkok |
| Total Solids Dried at 103-105 degree C | mg/L | - | 5 | 12 | ≤500 | APHA (2017), 2540 B | Bangkok |
| Turbidity | NTU | - | 0.1 | 0.20 | ≤5 | APHA (2017), 2130 B | Bangkok |

Guideline : Notification of the Ministry of Public Health No. 61 B.E. 2524 & 135 B.E. 2534 on bottled drinking water (No.2) & Pathogenic 416 B.E. 2563

Note : This Analysis test report is reissued to supersede report No.2430086-1, Date Reported : Sep 26, 2022 due to revise analytical information.

Sampled By : Teerawat Puangsuk

Remark :

- LOD : Limit of Detection
- "<" : Lower than LOQ (Limit of Quantitation) / LOR (Limit of Reporting)
- Analyte(s) marked * is/are not included in scope of Accreditation ISO/IEC 17025.
- The laboratory has been accepted as an accredited laboratory complying with the ISO/IEC 17025.

The above results are valid only for the analyzed/tested sample(s) as indicated in this report. No part of this report or certificate may be reproduced in any form without written consent from the Laboratory. ALS Laboratory Group (Thailand) strongly recommends that this report is not reproduced except in full.

Approved by

Sawitree N.

Sawitree Noisangiam
Manager

ADDRESS 104 Phatthanakan 40, Phatthanakan Rd., Khwaeng Phatthanakan, Khet Suan Luang, Bangkok 10250 Thailand | PHONE +66 0 2760 3000 | FAX +66 0 2760 3197

ALS LABORATORY GROUP (THAILAND) CO., LTD. An ALS Limited Company

5031-21/ EMAIL

Life Sciences

www.alsglobal.com

S:\Reports\All_GL.rpt (6:20PM)

RIGHT SOLUTIONS RIGHT PARTNER



Analysis / Test Report

Accreditation No. 1031/47

Client : Ratchaburi Power Co., Ltd.

245 Moo 6, Tumbol Bann - Rai, Amphur Damnoen Saduak, Ratchaburi Thailand 70130

P/O :

Project Name : Environmental Testing

Project Location :

Lot ID: 22122565

Date Received : Oct 19, 2022

Date Reported : Oct 22, 2022

Report Number : 2454694-1

Page 2 of 3

| | |
|--------------------------------|--|
| Sample Number | 22122565-2 |
| Sampled Date | Oct 19, 2022 12:00 PM |
| Sample Description | Drinking water |
| Location | Admin Build's Pantry FI 1 (RPCL) Pr. area |
| Date Analysis Commenced | Oct 20, 2022 |
| Condition of Sample | Contained in one plastic bottle, sample containers comply to pretreatment - preservation standards (APHA, USEPA) |

| Analyte | Unit | LOD | LOQ (LOR) | Result | Guideline / Specification | Method | Testing Location |
|----------------------|------|-----|-----------|--------|---------------------------|------------------------|------------------|
| Water Testing | | | | | | | |
| pH at 25 degree C | | - | - | 7.7 | 6.5-8.5 | APHA (2017), 4500-H(B) | Bangkok |

Guideline : Notification of the Ministry of Public Health No. 61 B.E. 2524 & 135 B.E. 2534 on bottled drinking water (No.2) & Pathogenic 416 B.E. 2563

Sampled By : Norrasat Komal

Remark :

- LOD : Limit of Detection
- "<" : Lower than LOQ (Limit of Quantitation) / LOR (Limit of Reporting)
- Analyte(s) marked * is/are not included in scope of Accreditation ISO/IEC 17025.
- The laboratory has been accepted as an accredited laboratory complying with the ISO/IEC 17025.

Approved by

Nant Somb

Nanthawadee Somboon
Specialist 1

The above results are valid only for the analyzed/tested sample(s) as indicated in this report. No part of this report or certificate may be reproduced in any form without written consent from the Laboratory. ALS Laboratory Group (Thailand) strongly recommends that this report is not reproduced except in full.

ADDRESS 104 Phatthanakan 40, Phatthanakan Rd., Khwaeng Phatthanakan, Khet Suan Luang, Bangkok 10250 Thailand | PHONE +66 0 2760 3000 | FAX +66 0 2760 3197

ALS LABORATORY GROUP (THAILAND) CO., LTD. An ALS Limited Company

5031-21/ENAIL Life Sciences

www.alsglobal.com

S:\Reports\All_GL.rpt (10:46AM)

RIGHT SOLUTIONS RIGHT PARTNER



Accreditation No. 1031/47

Analysis / Test Report

Client : Ratchaburi Power Co., Ltd.

245 Moo 6, Tumbol Bann - Rai, Amphur Damnoen Saduak, Ratchaburi Thailand 70130

P/O :

Project Name : Environmental Testing

Project Location :

Lot ID: 22112282

Date Received : Sep 15, 2022

Date Reported : Oct 24, 2022

Report Number : 2471863-1

Page 1 of 2

| | |
|-------------------------|--|
| Sample Number | 22112282-5 |
| Sampled Date | Sep 15, 2022 10:55 AM |
| Sample Description | Drinking water |
| Location | Canteen (Water Cooler) Inlet น้ำก๊อกในห้องครัว |
| Date Analysis Commenced | Sep 16, 2022 |
| Condition of Sample | Contained in two glass vials and five plastic bottles, sample containers comply to pretreatment - preservation standards (APHA, USEPA) |

| Analyte | Unit | LOD | LOQ (LOR) | Result | Guideline / Specification | Method | Testing Location |
|--------------------------------|-----------|--------|-----------|--------------|---------------------------|---|------------------|
| Metals Testing | | | | | | | |
| Aluminium | mg/L | 0.003 | 0.005 | 0.03 | ≤0.2 | Based on APHA (2017), 3125 | Bangkok |
| Arsenic | mg/L | 0.0003 | 0.0005 | 0.002 | ≤0.05 | Based on APHA (2017), 3125 | Bangkok |
| Barium | mg/L | 0.0003 | 0.0005 | 0.03 | ≤1.0 | Based on APHA (2017), 3125 | Bangkok |
| Cadmium | mg/L | 0.0003 | 0.0005 | Not Detected | ≤0.005 | Based on APHA (2017), 3125 | Bangkok |
| Chromium | mg/L | 0.0003 | 0.0005 | Not Detected | ≤0.05 | Based on APHA (2017), 3125 | Bangkok |
| Copper | mg/L | 0.0003 | 0.0005 | <0.0005 | ≤1.0 | Based on APHA (2017), 3125 | Bangkok |
| Iron | mg/L | 0.003 | 0.005 | 0.01 | ≤0.3 | Based on APHA (2017), 3125 | Bangkok |
| Lead | mg/L | 0.0003 | 0.0005 | Not Detected | ≤0.05 | Based on APHA (2017), 3125 | Bangkok |
| Manganese | mg/L | 0.0003 | 0.0005 | <0.0005 | ≤0.05 | Based on APHA (2017), 3125 | Bangkok |
| Mercury | mg/L | 0.0001 | 0.0005 | Not Detected | ≤0.002 | Based on US EPA, Method 1631 Revision E | Bangkok |
| Selenium | mg/L | 0.0003 | 0.0005 | Not Detected | ≤0.01 | Based on APHA (2017), 3125 | Bangkok |
| Silver | mg/L | 0.0003 | 0.0005 | Not Detected | ≤0.05 | Based on APHA (2017), 3125 | Bangkok |
| Zinc | mg/L | 0.003 | 0.005 | 0.06 | ≤5.0 | Based on APHA (2017), 3125 | Bangkok |
| Microbiological Testing | | | | | | | |
| <i>Escherichia coli</i> | in 100 mL | - | - | Not Detected | Not Detected | APHA (2017), 9221 F | Bangkok |
| <i>Salmonella spp.</i> | in 100 mL | - | - | Not Detected | Not Detected | ISO 19250 (2010) | Bangkok |
| <i>Staphylococcus aureus</i> | CFU/100mL | - | - | <1 | ≤100 | In-house method STM No. 01-054 in connection with: - APHA (2017), 9213 B - BAM (2016), Chapter 12 | Bangkok |
| Total Coliform | MPN/100mL | - | - | <1.1 | <2.2 | APHA (2017), 9221 B | Bangkok |
| Water Testing | | | | | | | |
| Alkylbenzene Sulfonate as MBAS | mg/L | 0.05 | 0.1 | Not Detected | ≤0.2 | APHA (2017), 5540 C | Bangkok |

The above results are valid only for the analyzed/tested sample(s) as indicated in this report. No part of this report or certificate may be reproduced in any form without written consent from the Laboratory. ALS Laboratory Group (Thailand) strongly recommends that this report is not reproduced except in full.

Approved by

Sawitree N.

Sawitree Noisangiam
Manager

ADDRESS 104 Phatthanakan 40, Phatthanakan Rd., Khwaeng Phatthanakan, Khet Suan Luang, Bangkok 10250 Thailand | PHONE +66 0 2760 3000 | FAX +66 0 2760 3197

ALS LABORATORY GROUP (THAILAND) CO., LTD. An ALS Limited Company

5031-21/ EMAIL

Life Sciences

www.alsglobal.com

S:\Reports_All_GL.rpt (6:20PM)

RIGHT SOLUTIONS RIGHT PARTNER



Accreditation No. 1031/47

Analysis / Test Report

Client : Ratchaburi Power Co., Ltd.

245 Moo 6, Tumbol Bann - Rai, Amphur Damnoen Saduak, Ratchaburi Thailand 70130

P/O :

Project Name : Environmental Testing

Project Location :

Lot ID: 22112282

Date Received : Sep 15, 2022

Date Reported : Oct 24, 2022

Report Number : 2471863-1

Page 2 of 2

| | |
|-------------------------|--|
| Sample Number | 22112282-5 |
| Sampled Date | Sep 15, 2022 10:55 AM |
| Sample Description | Drinking water |
| Location | Canteen (Water Cooler) Inlet น้ำกลั่นในห้องครัว |
| Date Analysis Commenced | Sep 16, 2022 |
| Condition of Sample | Contained in two glass vials and five plastic bottles, sample containers comply to pretreatment - preservation standards (APHA, USEPA) |

| Analyte | Unit | LOD | LOQ (LOR) | Result | Guideline / Specification | Method | Testing Location |
|--|------------|--------|-----------|--------------|---------------------------|---------------------------------------|------------------|
| Water Testing | | | | | | | |
| Chloride as Cl | mg/L | 0.06 | 0.2 | 19.8 | ≤250.0 | APHA (2017), 4110 B | Bangkok |
| Color | Color unit | - | 5 | <5 | ≤20 | APHA (2017), 2120 B | Bangkok |
| Cyanide as CN | mg/L | 0.002 | 0.005 | Not Detected | ≤0.1 | Based on APHA (2017), 4500-CN (C),(E) | Bangkok |
| Fluoride as F | mg/L | 0.05 | 0.1 | <0.1 | ≤1.5 | APHA (2017), 4110 B | Bangkok |
| Nitrate as N | mg/L | 0.06 | 0.2 | 0.2 | ≤4 | APHA (2017), 4110 B | Bangkok |
| Odour | - | - | - | Odourless | Odourless | APHA (2017), 2150 B | Bangkok |
| pH at 25 degree C | - | - | - | 7.8 | 6.5-8.5 | APHA (2017), 4500-H(B) | Bangkok |
| Phenol | mg/L | 0.0005 | 0.001 | Not Detected | ≤0.001 | Based on APHA (2017), 5530 C | Bangkok |
| Sulfate | mg/L | 0.15 | 0.5 | 3.8 | ≤250.0 | APHA (2017), 4110 B | Bangkok |
| Total Hardness as CaCO ₃ | mg/L | 0.5 | 1 | 92 | ≤100 | APHA (2017), 2340 C | Bangkok |
| Total Solids Dried at 103-105 degree C | mg/L | - | 5 | 140 | ≤500 | APHA (2017), 2540 B | Bangkok |
| Turbidity | NTU | - | 0.1 | 0.40 | ≤5 | APHA (2017), 2130 B | Bangkok |

Guideline : Notification of the Ministry of Public Health No. 61 B.E. 2524 & 135 B.E. 2534 on bottled drinking water (No.2) & Pathogenic 416 B.E. 2563

Note : This Analysis test report is reissued to supersede report No.2430086-1, Date Reported : Sep 26, 2022 due to revise analytical information.

Sampled By : Teerawat Puangsuk

Remark :

- LOD : Limit of Detection
- "<" : Lower than LOQ (Limit of Quantitation) / LOR (Limit of Reporting)
- Analyte(s) marked * is/are not included in scope of Accreditation ISO/IEC 17025.
- The laboratory has been accepted as an accredited laboratory complying with the ISO/IEC 17025.

The above results are valid only for the analyzed/tested sample(s) as indicated in this report. No part of this report or certificate may be reproduced in any form without written consent from the Laboratory. ALS Laboratory Group (Thailand) strongly recommends that this report is not reproduced except in full.

Approved by

Sawitree Noisangiam
Manager

ADDRESS 104 Phatthanakan 40, Phatthanakan Rd., Khwaeng Phatthanakan, Khet Suan Luang, Bangkok 10250 Thailand | PHONE +66 0 2760 3000 | FAX +66 0 2760 3197

ALS LABORATORY GROUP (THAILAND) CO., LTD. An ALS Limited Company

5031-21/EMATI

Life Sciences

www.alsglobal.com

S:\Reports_All_GL.rpt (6:20PM)

RIGHT SOLUTIONS RIGHT PARTNER



Accreditation No. 1031/47

Analysis / Test Report

Client : Ratchaburi Power Co., Ltd.

245 Moo 6, Tumbol Bann - Rai, Amphur Damnoen Saduak, Ratchaburi Thailand 70130

P/O :

Project Name : Environmental Testing

Project Location :

Lot ID: 22112282

Date Received : Sep 15, 2022

Date Reported : Oct 24, 2022

Report Number : 2471864-1

Page 1 of 2

| | |
|-------------------------|--|
| Sample Number | 22112282-6 |
| Sampled Date | Sep 15, 2022 11:00 AM |
| Sample Description | Drinking water |
| Location | Canteen RO |
| Date Analysis Commenced | Sep 16, 2022 |
| Condition of Sample | Contained in two glass vials and five plastic bottles, sample containers comply to pretreatment - preservation standards (APHA, USEPA) |

| Analyte | Unit | LOD | LOQ (LOR) | Result | Guideline / Specification | Method | Testing Location |
|--------------------------------|-----------|--------|-----------|--------------|---------------------------|---|------------------|
| Metals Testing | | | | | | | |
| Aluminium | mg/L | 0.003 | 0.005 | Not Detected | ≤0.2 | Based on APHA (2017), 3125 | Bangkok |
| Arsenic | mg/L | 0.0003 | 0.0005 | Not Detected | ≤0.05 | Based on APHA (2017), 3125 | Bangkok |
| Barium | mg/L | 0.0003 | 0.0005 | Not Detected | ≤1.0 | Based on APHA (2017), 3125 | Bangkok |
| Cadmium | mg/L | 0.0003 | 0.0005 | Not Detected | ≤0.005 | Based on APHA (2017), 3125 | Bangkok |
| Chromium | mg/L | 0.0003 | 0.0005 | Not Detected | ≤0.05 | Based on APHA (2017), 3125 | Bangkok |
| Copper | mg/L | 0.0003 | 0.0005 | 0.02 | ≤1.0 | Based on APHA (2017), 3125 | Bangkok |
| Iron | mg/L | 0.003 | 0.005 | Not Detected | ≤0.3 | Based on APHA (2017), 3125 | Bangkok |
| Lead | mg/L | 0.0003 | 0.0005 | 0.0008 | ≤0.05 | Based on APHA (2017), 3125 | Bangkok |
| Manganese | mg/L | 0.0003 | 0.0005 | Not Detected | ≤0.05 | Based on APHA (2017), 3125 | Bangkok |
| Mercury | mg/L | 0.0001 | 0.0005 | Not Detected | ≤0.002 | Based on US EPA, Method 1631 Revision E | Bangkok |
| Selenium | mg/L | 0.0003 | 0.0005 | Not Detected | ≤0.01 | Based on APHA (2017), 3125 | Bangkok |
| Silver | mg/L | 0.0003 | 0.0005 | Not Detected | ≤0.05 | Based on APHA (2017), 3125 | Bangkok |
| Zinc | mg/L | 0.003 | 0.005 | 0.01 | ≤5.0 | Based on APHA (2017), 3125 | Bangkok |
| Microbiological Testing | | | | | | | |
| <i>Escherichia coli</i> | in 100 mL | - | - | Not Detected | Not Detected | APHA (2017), 9221 F | Bangkok |
| <i>Salmonella spp.</i> | in 100 mL | - | - | Not Detected | Not Detected | ISO 19250 (2010) | Bangkok |
| <i>Staphylococcus aureus</i> | CFU/100mL | - | - | <1 | ≤100 | In-house method STM No. 01-054 in connection with: - APHA (2017), 9213 B - BAM (2016), Chapter 12 | Bangkok |
| Total Coliform | MPN/100mL | - | - | <1.1 | <2.2 | APHA (2017), 9221 B | Bangkok |
| Water Testing | | | | | | | |
| Alkylbenzene Sulfonate as MBAS | mg/L | 0.05 | 0.1 | Not Detected | ≤0.2 | APHA (2017), 5540 C | Bangkok |

The above results are valid only for the analyzed/tested sample(s) as indicated in this report. No part of this report or certificate may be reproduced in any form without written consent from the Laboratory. ALS Laboratory Group (Thailand) strongly recommends that this report is not reproduced except in full.

Approved by

Sawitree N.

Sawitree Noisangiam
Manager

ADDRESS 104 Phatthanakan 40, Phatthanakan Rd., Khwaeng Phatthanakan, Khet Suan Luang, Bangkok 10250 Thailand | PHONE +66 0 2760 3000 | FAX +66 0 2760 3197

ALS LABORATORY GROUP (THAILAND) CO., LTD. An ALS Limited Company

5031-21/ EMAIL

Life Sciences

www.alsglobal.com

S:\Reports\All_GL.rpt (6:21PM)

RIGHT SOLUTIONS RIGHT PARTNER



Accreditation No. 1031/47

Analysis / Test Report

Client : Ratchaburi Power Co., Ltd.

245 Moo 6, Tumbol Bann - Rai, Amphur Damnoen Saduak, Ratchaburi Thailand 70130

P/O :

Project Name : Environmental Testing

Project Location :

Lot ID: 22112282

Date Received : Sep 15, 2022

Date Reported : Oct 24, 2022

Report Number : 2471864-1

Page 2 of 2

| | |
|-------------------------|--|
| Sample Number | 22112282-6 |
| Sampled Date | Sep 15, 2022 11:00 AM |
| Sample Description | Drinking water |
| Location | Canteen RO |
| Date Analysis Commenced | Sep 16, 2022 |
| Condition of Sample | Contained in two glass vials and five plastic bottles, sample containers comply to pretreatment - preservation standards (APHA, USEPA) |

| Analyte | Unit | LOD | LOQ (LOR) | Result | Guideline / Specification | Method | Testing Location |
|--|------------|--------|-----------|--------------|---------------------------|---------------------------------------|------------------|
| Water Testing | | | | | | | |
| Chloride as Cl | mg/L | 0.06 | 0.2 | <0.2 | ≤250.0 | APHA (2017), 4110 B | Bangkok |
| Color | Color unit | - | 5 | <5 | ≤20 | APHA (2017), 2120 B | Bangkok |
| Cyanide as CN | mg/L | 0.002 | 0.005 | Not Detected | ≤0.1 | Based on APHA (2017), 4500-CN (C),(E) | Bangkok |
| Fluoride as F | mg/L | 0.05 | 0.1 | <0.1 | ≤1.5 | APHA (2017), 4110 B | Bangkok |
| Nitrate as N | mg/L | 0.06 | 0.2 | Not Detected | ≤4 | APHA (2017), 4110 B | Bangkok |
| Odour | - | - | - | Odourless | Odourless | APHA (2017), 2150 B | Bangkok |
| pH at 25 degree C | - | - | - | 6.8 | 6.5-8.5 | APHA (2017), 4500-H(B) | Bangkok |
| Phenol | mg/L | 0.0005 | 0.001 | Not Detected | ≤0.001 | Based on APHA (2017), 5530 C | Bangkok |
| Sulfate | mg/L | 0.15 | 0.5 | Not Detected | ≤250.0 | APHA (2017), 4110 B | Bangkok |
| Total Hardness as CaCO ₃ | mg/L | 0.5 | 1 | <1 | ≤100 | APHA (2017), 2340 C | Bangkok |
| Total Solids Dried at 103-105 degree C | mg/L | - | 5 | 8 | ≤500 | APHA (2017), 2540 B | Bangkok |
| Turbidity | NTU | - | 0.1 | 0.20 | ≤5 | APHA (2017), 2130 B | Bangkok |

Guideline : Notification of the Ministry of Public Health No. 61 B.E. 2524 & 135 B.E. 2534 on bottled drinking water (No.2) & Pathogenic 416 B.E. 2563

Note : This Analysis test report is reissued to supersede report No.2430086-1, Date Reported : Sep 26, 2022 due to revise analytical information.

Sampled By : Teerawat Puangsuk

Remark :

- LOD : Limit of Detection
- "<" : Lower than LOQ (Limit of Quantitation) / LOR (Limit of Reporting)
- Analyte(s) marked * is/are not included in scope of Accreditation ISO/IEC 17025.
- The laboratory has been accepted as an accredited laboratory complying with the ISO/IEC 17025.

The above results are valid only for the analyzed/tested sample(s) as indicated in this report. No part of this report or certificate may be reproduced in any form without written consent from the Laboratory. ALS Laboratory Group (Thailand) strongly recommends that this report is not reproduced except in full.

Approved by

Sawitree N.

Sawitree Noisangiam
Manager

ADDRESS 104 Phatthanakan 40, Phatthanakan Rd., Khwaeng Phatthanakan, Khet Suan Luang, Bangkok 10250 Thailand | PHONE +66 0 2760 3000 | FAX +66 0 2760 3197

ALS LABORATORY GROUP (THAILAND) CO., LTD. An ALS Limited Company

5031-21/ EMAIL

Life Sciences

www.alsglobal.com

S:\Reports\All_GL.rpt (6:21PM)

RIGHT SOLUTIONS RIGHT PARTNER



Accreditation No. 1031/47

Analysis / Test Report

Client : Ratchaburi Power Co., Ltd.

245 Moo 6, Tumbol Bann - Rai, Amphur Damnoen Saduak, Ratchaburi Thailand 70130

P/O :

Project Name : Environmental Testing

Project Location :

Lot ID: 22112282

Date Received : Sep 15, 2022

Date Reported : Oct 24, 2022

Report Number : 2471865-1

Page 1 of 2

| Sample Number | 22112282-7 | | | | | | |
|--------------------------------|--|--------|-----------|--------------|---------------------------|---|------------------|
| Sampled Date | Sep 15, 2022 11:10 AM | | | | | | |
| Sample Description | Drinking water | | | | | | |
| Location | Warehouse & Maintenance Building | | | | | | |
| Date Analysis Commenced | Sep 16, 2022 | | | | | | |
| Condition of Sample | Contained in two glass vials and five plastic bottles, sample containers comply to pretreatment - preservation standards (APHA, USEPA) | | | | | | |
| Analyte | Unit | LOD | LOQ (LOR) | Result | Guideline / Specification | Method | Testing Location |
| Metals Testing | | | | | | | |
| Aluminium | mg/L | 0.003 | 0.005 | Not Detected | ≤0.2 | Based on APHA (2017), 3125 | Bangkok |
| Arsenic | mg/L | 0.0003 | 0.0005 | <0.0005 | ≤0.05 | Based on APHA (2017), 3125 | Bangkok |
| Barium | mg/L | 0.0003 | 0.0005 | 0.001 | ≤1.0 | Based on APHA (2017), 3125 | Bangkok |
| Cadmium | mg/L | 0.0003 | 0.0005 | Not Detected | ≤0.005 | Based on APHA (2017), 3125 | Bangkok |
| Chromium | mg/L | 0.0003 | 0.0005 | Not Detected | ≤0.05 | Based on APHA (2017), 3125 | Bangkok |
| Copper | mg/L | 0.0003 | 0.0005 | Not Detected | ≤1.0 | Based on APHA (2017), 3125 | Bangkok |
| Iron | mg/L | 0.003 | 0.005 | Not Detected | ≤0.3 | Based on APHA (2017), 3125 | Bangkok |
| Lead | mg/L | 0.0003 | 0.0005 | Not Detected | ≤0.05 | Based on APHA (2017), 3125 | Bangkok |
| Manganese | mg/L | 0.0003 | 0.0005 | Not Detected | ≤0.05 | Based on APHA (2017), 3125 | Bangkok |
| Mercury | mg/L | 0.0001 | 0.0005 | Not Detected | ≤0.002 | Based on US EPA, Method 1631 Revision E | Bangkok |
| Selenium | mg/L | 0.0003 | 0.0005 | Not Detected | ≤0.01 | Based on APHA (2017), 3125 | Bangkok |
| Silver | mg/L | 0.0003 | 0.0005 | <0.0005 | ≤0.05 | Based on APHA (2017), 3125 | Bangkok |
| Zinc | mg/L | 0.003 | 0.005 | 0.01 | ≤5.0 | Based on APHA (2017), 3125 | Bangkok |
| Microbiological Testing | | | | | | | |
| <i>Escherichia coli</i> | in 100 mL | - | - | Not Detected | Not Detected | APHA (2017), 9221 F | Bangkok |
| <i>Salmonella spp.</i> | in 100 mL | - | - | Not Detected | Not Detected | ISO 19250 (2010) | Bangkok |
| <i>Staphylococcus aureus</i> | CFU/100mL | - | - | <1 | ≤100 | In-house method STM No. 01-054 in connection with: - APHA (2017), 9213 B - BAM (2016), Chapter 12 | Bangkok |
| Total Coliform | MPN/100mL | - | - | <1.1 | <2.2 | APHA (2017), 9221 B | Bangkok |
| Water Testing | | | | | | | |
| Alkylbenzene Sulfonate as MBAS | mg/L | 0.05 | 0.1 | Not Detected | ≤0.2 | APHA (2017), 5540 C | Bangkok |

The above results are valid only for the analyzed/tested sample(s) as indicated in this report. No part of this report or certificate may be reproduced in any form without written consent from the Laboratory. ALS Laboratory Group (Thailand) strongly recommends that this report is not reproduced except in full.

Approved by

Sawitree N.

Sawitree Noisangiam
Manager

ADDRESS 104 Phatthanakan 40, Phatthanakan Rd., Khwaeng Phatthanakan, Khet Suan Luang, Bangkok 10250 Thailand | PHONE +66 0 2760 3000 | FAX +66 0 2760 3197

ALS LABORATORY GROUP (THAILAND) CO., LTD. An ALS Limited Company

5031-21/ ENVI Life Sciences

www.alsglobal.com

S:\Reports\All_GL.rpt (6:21PM)

RIGHT SOLUTIONS RIGHT PARTNER



Accreditation No. 1031/47

Analysis / Test Report

Client : Ratchaburi Power Co., Ltd.

245 Moo 6, Tumbol Bann - Rai, Amphur Damnoen Saduak, Ratchaburi Thailand 70130

P/O :

Project Name : Environmental Testing

Project Location :

Lot ID: 22112282

Date Received : Sep 15, 2022

Date Reported : Oct 24, 2022

Report Number : 2471865-1

Page 2 of 2

| | | | | | | | |
|-------------------------|--|--|--|--|--|--|--|
| Sample Number | 22112282-7 | | | | | | |
| Sampled Date | Sep 15, 2022 11:10 AM | | | | | | |
| Sample Description | Drinking water | | | | | | |
| Location | Warehouse & Maintenance Building | | | | | | |
| Date Analysis Commenced | Sep 16, 2022 | | | | | | |
| Condition of Sample | Contained in two glass vials and five plastic bottles, sample containers comply to pretreatment - preservation standards (APHA, USEPA) | | | | | | |

| Analyte | Unit | LOD | LOQ (LOR) | Result | Guideline / Specification | Method | Testing Location |
|--|------------|--------|-----------|--------------|---------------------------|---------------------------------------|------------------|
| Water Testing | | | | | | | |
| Chloride as Cl | mg/L | 0.06 | 0.2 | 1.8 | ≤250.0 | APHA (2017), 4110 B | Bangkok |
| Color | Color unit | - | 5 | <5 | ≤20 | APHA (2017), 2120 B | Bangkok |
| Cyanide as CN | mg/L | 0.002 | 0.005 | Not Detected | ≤0.1 | Based on APHA (2017), 4500-CN (C),(E) | Bangkok |
| Fluoride as F | mg/L | 0.05 | 0.1 | Not Detected | ≤1.5 | APHA (2017), 4110 B | Bangkok |
| Nitrate as N | mg/L | 0.06 | 0.2 | Not Detected | ≤4 | APHA (2017), 4110 B | Bangkok |
| Odour | - | - | - | Odourless | Odourless | APHA (2017), 2150 B | Bangkok |
| Phenol | mg/L | 0.0005 | 0.001 | Not Detected | ≤0.001 | Based on APHA (2017), 5530 C | Bangkok |
| Sulfate | mg/L | 0.15 | 0.5 | <0.5 | ≤250.0 | APHA (2017), 4110 B | Bangkok |
| Total Hardness as CaCO ₃ | mg/L | 0.5 | 1 | 4 | ≤100 | APHA (2017), 2340 C | Bangkok |
| Total Solids Dried at 103-105 degree C | mg/L | - | 5 | 19 | ≤500 | APHA (2017), 2540 B | Bangkok |
| Turbidity | NTU | - | 0.1 | 0.20 | ≤5 | APHA (2017), 2130 B | Bangkok |

Guideline : Notification of the Ministry of Public Health No. 61 B.E. 2524 & 135 B.E. 2534 on bottled drinking water (No.2) & Pathogenic 416 B.E. 2563

Note : This Analysis test report is reissued to supersede report No.2430086-1, Date Reported : Sep 26, 2022 due to revise analytical information.

Sampled By : Teerawat Puangsuk

Remark :

- LOD : Limit of Detection
- "<" : Lower than LOQ (Limit of Quantitation) / LOR (Limit of Reporting)
- Analyte(s) marked * is/are not included in scope of Accreditation ISO/IEC 17025.
- The laboratory has been accepted as an accredited laboratory complying with the ISO/IEC 17025.

The above results are valid only for the analyzed/tested sample(s) as indicated in this report. No part of this report or certificate may be reproduced in any form without written consent from the Laboratory. ALS Laboratory Group (Thailand) strongly recommends that this report is not reproduced except in full.

Approved by

Sawitree N.

Sawitree Noisangiam
Manager

ADDRESS 104 Phatthanakan 40, Phatthanakan Rd., Khwaeng Phatthanakan, Khet Suan Luang, Bangkok 10250 Thailand | PHONE +66 0 2760 3000 | FAX +66 0 2760 3197

ALS LABORATORY GROUP (THAILAND) CO., LTD. An ALS Limited Company

5031-21/ EMAIL Life Sciences

www.alsglobal.com

S:\Reports_All_GL.rpt (6:21PM)

RIGHT SOLUTIONS RIGHT PARTNER



Accreditation No. 1031/47

Analysis / Test Report

Client : Ratchaburi Power Co., Ltd.

245 Moo 6, Tumbol Bann - Rai, Amphur Damnoen Saduak, Ratchaburi Thailand 70130

P/O :

Project Name : Environmental Testing

Project Location :

Lot ID: 22122565

Date Received : Oct 19, 2022

Date Reported : Oct 22, 2022

Report Number : 2454694-1

Page 3 of 3

| | |
|-------------------------|--|
| Sample Number | 22122565-3 |
| Sampled Date | Oct 19, 2022 11:50 AM |
| Sample Description | Drinking water |
| Location | Warehouse & Maintenance Building |
| Date Analysis Commenced | Oct 20, 2022 |
| Condition of Sample | Contained in one plastic bottle, sample containers comply to pretreatment - preservation standards (APHA, USEPA) |

| Analyte | Unit | LOD | LOQ (LOR) | Result | Guideline / Specification | Method | Testing Location |
|----------------------|------|-----|-----------|--------|---------------------------|------------------------|------------------|
| Water Testing | | | | | | | |
| pH at 25 degree C | | - | - | 7.4 | 6.5-8.5 | APHA (2017), 4500-H(B) | Bangkok |

Guideline : Notification of the Ministry of Public Health No. 61 B.E. 2524 & 135 B.E. 2534 on bottled drinking water (No.2) & Pathogenic 416 B.E. 2563

Sampled By : Norrasat Komal

Remark :

- LOD : Limit of Detection
- "<" : Lower than LOQ (Limit of Quantitation) / LOR (Limit of Reporting)
- Analyte(s) marked * is/are not included in scope of Accreditation ISO/IEC 17025.
- The laboratory has been accepted as an accredited laboratory complying with the ISO/IEC 17025.

The above results are valid only for the analyzed/tested sample(s) as indicated in this report. No part of this report or certificate may be reproduced in any form without written consent from the Laboratory. ALS Laboratory Group (Thailand) strongly recommends that this report is not reproduced except in full.

Approved by

Nanthawadee Somboon
Specialist 1

ADDRESS 104 Phatthanakan 40, Phatthanakan Rd., Khwaeng Phatthanakan, Khet Suan Luang, Bangkok 10250 Thailand | PHONE +66 0 2760 3000 | FAX +66 0 2760 3197

ALS LABORATORY GROUP (THAILAND) CO., LTD. An ALS Limited Company

5031-21/ENAT

Life Sciences

www.alsglobal.com

S:\Reports\All_GL_rpt (10:46AM)

RIGHT SOLUTIONS RIGHT PARTNER



Accreditation No. 1031/47

Analysis / Test Report

Client : Ratchaburi Power Co., Ltd.

245 Moo 6, Tumbol Bann - Rai, Amphur Damnoen Saduak, Ratchaburi Thailand 70130

P/O :

Project Name : Environmental Testing

Project Location :

Lot ID: 22112282

Date Received : Sep 15, 2022

Date Reported : Oct 24, 2022

Report Number : 2471866-1

Page 1 of 2

| | | | | | | | |
|-------------------------|--|--|--|--|--|--|--|
| Sample Number | 22112282-8 | | | | | | |
| Sampled Date | Sep 15, 2022 11:40 AM | | | | | | |
| Sample Description | Drinking water | | | | | | |
| Location | Guardhouse Building | | | | | | |
| Date Analysis Commenced | Sep 16, 2022 | | | | | | |
| Condition of Sample | Contained in two glass vials and five plastic bottles, sample containers comply to pretreatment - preservation standards (APHA, USEPA) | | | | | | |

| Analyte | Unit | LOD | LOQ (LOR) | Result | Guideline / Specification | Method | Testing Location |
|--------------------------------|-----------|--------|-----------|--------------|---------------------------|---|------------------|
| Metals Testing | | | | | | | |
| Aluminium | mg/L | 0.003 | 0.005 | Not Detected | ≤0.2 | Based on APHA (2017), 3125 | Bangkok |
| Arsenic | mg/L | 0.0003 | 0.0005 | Not Detected | ≤0.05 | Based on APHA (2017), 3125 | Bangkok |
| Barium | mg/L | 0.0003 | 0.0005 | 0.0008 | ≤1.0 | Based on APHA (2017), 3125 | Bangkok |
| Cadmium | mg/L | 0.0003 | 0.0005 | Not Detected | ≤0.005 | Based on APHA (2017), 3125 | Bangkok |
| Chromium | mg/L | 0.0003 | 0.0005 | Not Detected | ≤0.05 | Based on APHA (2017), 3125 | Bangkok |
| Copper | mg/L | 0.0003 | 0.0005 | Not Detected | ≤1.0 | Based on APHA (2017), 3125 | Bangkok |
| Iron | mg/L | 0.003 | 0.005 | Not Detected | ≤0.3 | Based on APHA (2017), 3125 | Bangkok |
| Lead | mg/L | 0.0003 | 0.0005 | Not Detected | ≤0.05 | Based on APHA (2017), 3125 | Bangkok |
| Manganese | mg/L | 0.0003 | 0.0005 | Not Detected | ≤0.05 | Based on APHA (2017), 3125 | Bangkok |
| Mercury | mg/L | 0.0001 | 0.0005 | Not Detected | ≤0.002 | Based on US EPA, Method 1631 Revision E | Bangkok |
| Selenium | mg/L | 0.0003 | 0.0005 | Not Detected | ≤0.01 | Based on APHA (2017), 3125 | Bangkok |
| Silver | mg/L | 0.0003 | 0.0005 | Not Detected | ≤0.05 | Based on APHA (2017), 3125 | Bangkok |
| Zinc | mg/L | 0.003 | 0.005 | 0.005 | ≤5.0 | Based on APHA (2017), 3125 | Bangkok |
| Microbiological Testing | | | | | | | |
| <i>Escherichia coli</i> | in 100 mL | - | - | Not Detected | Not Detected | APHA (2017), 9221 F | Bangkok |
| <i>Salmonella spp.</i> | in 100 mL | - | - | Not Detected | Not Detected | ISO 19250 (2010) | Bangkok |
| <i>Staphylococcus aureus</i> | CFU/100mL | - | - | <1 | ≤100 | In-house method STM No. 01-054 in connection with: - APHA (2017), 9213 B - BAM (2016), Chapter 12 | Bangkok |
| Total Coliform | MPN/100mL | - | - | <1.1 | <2.2 | APHA (2017), 9221 B | Bangkok |
| Water Testing | | | | | | | |
| Alkylbenzene Sulfonate as MBAS | mg/L | 0.05 | 0.1 | Not Detected | ≤0.2 | APHA (2017), 5540 C | Bangkok |

The above results are valid only for the analyzed/tested sample(s) as indicated in this report. No part of this report or certificate may be reproduced in any form without written consent from the Laboratory. ALS Laboratory Group (Thailand) strongly recommends that this report is not reproduced except in full.

Approved by

Sawitree Noisangiam
Manager

ADDRESS 104 Phatthanakan 40, Phatthanakan Rd., Khwaeng Phatthanakan, Khet Suan Luang, Bangkok 10250 Thailand | PHONE +66 0 2760 3000 | FAX +66 0 2760 3197

ALS LABORATORY GROUP (THAILAND) CO., LTD. An ALS Limited Company

5031-21/ ENAIL

Life Sciences

www.alsglobal.com

S:\Reports\All_GL.rpt (6:21PM)

RIGHT SOLUTIONS RIGHT PARTNER



Accreditation No. 1031/47

Analysis / Test Report

Client : Ratchaburi Power Co., Ltd.

245 Moo 6, Tumbol Bann - Rai, Amphur Damnoen Saduak, Ratchaburi Thailand 70130

P/O :

Project Name : Environmental Testing

Project Location :

Lot ID: 22112282

Date Received : Sep 15, 2022

Date Reported : Oct 24, 2022

Report Number : 2471866-1

Page 2 of 2

| | |
|-------------------------|--|
| Sample Number | 22112282-8 |
| Sampled Date | Sep 15, 2022 11:40 AM |
| Sample Description | Drinking water |
| Location | Guardhouse Building |
| Date Analysis Commenced | Sep 16, 2022 |
| Condition of Sample | Contained in two glass vials and five plastic bottles, sample containers comply to pretreatment - preservation standards (APHA, USEPA) |

| Analyte | Unit | LOD | LOQ (LOR) | Result | Guideline / Specification | Method | Testing Location |
|--|------------|--------|-----------|--------------|---------------------------|---------------------------------------|------------------|
| Water Testing | | | | | | | |
| Chloride as Cl | mg/L | 0.06 | 0.2 | 2.0 | ≤250.0 | APHA (2017), 4110 B | Bangkok |
| Color | Color unit | - | 5 | <5 | ≤20 | APHA (2017), 2120 B | Bangkok |
| Cyanide as CN | mg/L | 0.002 | 0.005 | Not Detected | ≤0.1 | Based on APHA (2017), 4500-CN (C),(E) | Bangkok |
| Fluoride as F | mg/L | 0.05 | 0.1 | Not Detected | ≤1.5 | APHA (2017), 4110 B | Bangkok |
| Nitrate as N | mg/L | 0.06 | 0.2 | <0.2 | ≤4 | APHA (2017), 4110 B | Bangkok |
| Odour | - | - | - | Odourless | Odourless | APHA (2017), 2150 B | Bangkok |
| pH at 25 degree C | - | - | - | 7.0 | 6.5-8.5 | APHA (2017), 4500-H(B) | Bangkok |
| Phenol | mg/L | 0.0005 | 0.001 | Not Detected | ≤0.001 | Based on APHA (2017), 5530 C | Bangkok |
| Sulfate | mg/L | 0.15 | 0.5 | <0.5 | ≤250.0 | APHA (2017), 4110 B | Bangkok |
| Total Hardness as CaCO ₃ | mg/L | 0.5 | 1 | 5 | ≤100 | APHA (2017), 2340 C | Bangkok |
| Total Solids Dried at 103-105 degree C | mg/L | - | 5 | 13 | ≤500 | APHA (2017), 2540 B | Bangkok |
| Turbidity | NTU | - | 0.1 | 0.15 | ≤5 | APHA (2017), 2130 B | Bangkok |

Guideline : Notification of the Ministry of Public Health No. 61 B.E. 2524 & 135 B.E. 2534 on bottled drinking water (No.2) & Pathogenic 416 B.E. 2563**Note :** This Analysis test report is reissued to supersede report No.2430086-1, Date Reported : Sep 26, 2022 due to revise analytical information.**Sampled By :** Teerawat Puangsuk

Remark :

- LOD : Limit of Detection
- "<" : Lower than LOQ (Limit of Quantitation) / LOR (Limit of Reporting)
- Analyte(s) marked * is/are not included in scope of Accreditation ISO/IEC 17025.
- The laboratory has been accepted as an accredited laboratory complying with the ISO/IEC 17025.

The above results are valid only for the analyzed/tested sample(s) as indicated in this report. No part of this report or certificate may be reproduced in any form without written consent from the Laboratory. ALS Laboratory Group (Thailand) strongly recommends that this report is not reproduced except in full.

Approved by

Sawitree Noisangiam
Manager

ADDRESS 104 Phatthanakan 40, Phatthanakan Rd., Khwaeng Phatthanakan, Khet Suan Luang, Bangkok 10250 Thailand | PHONE +66 0 2760 3000 | FAX +66 0 2760 3197

ALS LABORATORY GROUP (THAILAND) CO., LTD. An ALS Limited Company

5031-21/ EMAIL

Life Sciences

www.alsglobal.com

S:\Reports_All_GL.rpt (6:21PM)

RIGHT SOLUTIONS RIGHT PARTNER



Admin Build's Pantry 2 nd Fl (CRESSO)



Admin Build's Pantry FL 1 (RPCL)



Admin Build's Pantry FL 1 (RPCL) Pr. area



Canteen (Water Cooler) Inlet น้ำก๊อกในห้องครัว



Canteen RO



Warehouse & Maintenance Building



Guardhouse Building

ภาพแสดงการเก็บตัวอย่างน้ำดื่มภายในโครงการ

ภาคผนวก จ-12

ผลตรวจวัดระดับเสียงสะสม



Analysis / Test Report

Client : Ratchaburi Power Co., Ltd.
245 Moo 6, Tumbol Bann - Rai, Amphur Damnoen Saduak, Ratchaburi Thailand 70130
P/O : PO220677-2
Project Name : Environmental Testing
Project Location :

Lot ID: 2281704

Date Received : Dec 01, 2022
Date Reported : Dec 10, 2022
Report Number : 2362939-1 Rev. No.1

Page 1 of 5

| | |
|--------------------------------|--------------------|
| Sample Number | 2281704-3 |
| Sampled Date | Nov 30, 2022 |
| Sample Description | Noise Dose |
| Location | Local Area Block 1 |
| Personal Sampling | บุคคล ชีวอยู่ |
| Date Analysis Commenced | Dec 01, 2022 |

| Analyte | Sampled Date/time | Unit | LOD | LOQ (LOR) | Result | Guideline Limit | Method | Guideline | Testing Location |
|---------------------|---------------------|-------|-----|-----------|--------|-----------------|--|-----------|------------------|
| Air Testing | | | | | | | | | |
| Noise Dose (8 hrs.) | 08:30 AM - 04:30 PM | % | - | 1 | <1 | No Standard | MOL, Department Labour Protection and Welfare (B.E.2561) | MOL | Bangkok |
| TWA (8 hrs.) | 08:30 AM - 04:30 PM | dB(A) | - | - | 63.1 | 85 | MOL, Department Labour Protection and Welfare (B.E.2561) | MOL | Bangkok |

Guideline :

- MOL : 1. Notification of Department Labour Protection and Welfare on the Criteria and Procedures for Measurement and Analysis of Working Conditions in relation to Heat, Light or Noise Levels, including Duration and Types of Business that must perform (B.E. 2561)
2. Notification of Department of Labour Protection and Welfare on the Standard of Time Weighted Average (TWA) Noise Level (B.E. 2561)

Note : This Analysis test report is reissued to supersede report No 2362939 -1 Reported : Dec 2,2022 due to revise sample information.

Sampled By : Phongsiri Somkaew

Remark :

- LOD : Limit of Detection
- "<" : Lower than LOQ (Limit of Quantitation) / LOR (Limit of Reporting)

Approved by

Wichan Choonharat

Wichan Choonharat
Assistant Manager

The above results are valid only for the analyzed/tested sample(s) as indicated in this report. No part of this report or certificate may be reproduced in any form without written consent from the Laboratory. ALS Laboratory Group (Thailand) strongly recommends that this report is not reproduced except in full.

ADDRESS 104 Phatthanakan 40, Phatthanakan Rd., Khwaeng Phatthanakan, Khet Suan Luang, Bangkok 10250 Thailand | PHONE +66 0 2760 3000 | FAX +66 0 2760 3197

ALS LABORATORY GROUP (THAILAND) CO., LTD. An ALS Limited Company

5031-52/ EMAIL

Life Sciences

www.alsglobal.com

RIGHT SOLUTIONS RIGHT PARTNER



Analysis / Test Report

Client : Ratchaburi Power Co., Ltd.
245 Moo 6, Tumbol Bann - Rai, Amphur Damnoen Saduak, Ratchaburi Thailand
70130
P/O : PO220677-2
Project Name : Environmental Testing
Project Location :

Lot ID: 2281704

Date Received : Dec 01, 2022
Date Reported : Dec 10, 2022
Report Number : 2362939-1 Rev. No.1

Page 2 of 5

Sample Number 2281704-4
Sampled Date Nov 30, 2022
Sample Description Noise Dose
Location Local Area Block 2
Personal Sampling คุณสมนึก ดริ้มแสง
Date Analysis Commenced Dec 01, 2022

| Analyte | Sampled Date/time | Unit | LOD | LOQ (LOR) | Result | Guideline Limit | Method | Guideline | Testing Location |
|---------------------|---------------------|-------|-----|-----------|--------|-----------------|--|-----------|------------------|
| Air Testing | | | | | | | | | |
| Noise Dose (8 hrs.) | 08:30 AM - 04:30 PM | % | - | 1 | 15.8 | No Standard | MOL, Department Labour Protection and Welfare (B.E.2561) | MOL | Bangkok |
| TWA (8 hrs.) | 08:30 AM - 04:30 PM | dB(A) | - | - | 77.0 | 85 | MOL, Department Labour Protection and Welfare (B.E.2561) | MOL | Bangkok |

Guideline :

- MOL : 1. Notification of Department Labour Protection and Welfare on the Criteria and Procedures for Measurement and Analysis of Working Conditions in relation to Heat, Light or Noise Levels, including Duration and Types of Business that must perform (B.E. 2561)
2. Notification of Department of Labour Protection and Welfare on the Standard of Time Weighted Average (TWA) Noise Level (B.E. 2561)

Note : This Analysis test report is reissued to supersede report No 2362939 -1 Reported : Dec 2,2022 due to revise sample information.

Sampled By : Phongsiri Somkaew

Remark :

- LOD : Limit of Detection
- "<" : Lower than LOQ (Limit of Quantitation) / LOR (Limit of Reporting)

Approved by

Wichan Choonharat
Assistant Manager

The above results are valid only for the analyzed/tested sample(s) as indicated in this report. No part of this report or certificate may be reproduced in any form without written consent from the Laboratory. ALS Laboratory Group (Thailand) strongly recommends that this report is not reproduced except in full.

ADDRESS 104 Phatthanakan 40, Phatthanakan Rd., Khwaeng Phatthanakan, Khet Suan Luang, Bangkok 10250 Thailand | PHONE +66 0 2760 3000 | FAX +66 0 2760 3197

ALS LABORATORY GROUP (THAILAND) CO., LTD. An ALS Limited Company

5034-52/ EMAIL

Life Sciences

www.alsglobal.com

RIGHT SOLUTIONS RIGHT PARTNER



Analysis / Test Report

Client : Ratchaburi Power Co., Ltd.
245 Moo 6, Tumbol Bann - Rai, Amphur Damnoen Saduak, Ratchaburi Thailand
70130
P/O : PO220677-2
Project Name : Environmental Testing
Project Location :

Lot ID: 2281704

Date Received : Dec 01, 2022
Date Reported : Dec 10, 2022
Report Number : 2362939-1 Rev. No.1

Page 3 of 5

Sample Number 2281704-5
Sampled Date Nov 30, 2022
Sample Description Noise Dose
Location แม่บ้าน อาคาร GT Block 2 ชั้น 1
Personal Sampling คุณอรอนงค์ พุทธรอด
Date Analysis Commenced Dec 01, 2022

| Analyte | Sampled Date/time | Unit | LOD | LOQ (LOR) | Result | Guideline Limit | Method | Guideline | Testing Location |
|---------------------|---------------------|-------|-----|-----------|--------|-----------------|--|-----------|------------------|
| Air Testing | | | | | | | | | |
| Noise Dose (8 hrs.) | 08:30 AM - 04:30 PM | % | - | 1 | 7.2 | No Standard | MOL, Department Labour Protection and Welfare (B.E.2561) | MOL | Bangkok |
| TWA (8 hrs.) | 08:30 AM - 04:30 PM | dB(A) | - | - | 73.6 | 85 | MOL, Department Labour Protection and Welfare (B.E.2561) | MOL | Bangkok |

Guideline :

- MOL : 1. Notification of Department Labour Protection and Welfare on the Criteria and Procedures for Measurement and Analysis of Working Conditions in relation to Heat, Light or Noise Levels, including Duration and Types of Business that must perform (B.E. 2561)
2. Notification of Department of Labour Protection and Welfare on the Standard of Time Weighted Average (TWA) Noise Level (B.E. 2561)

Note : This Analysis test report is reissued to supersede report No 2362939 -1 Reported : Dec 2,2022 due to revise sample information.

Sampled By : Phongsiri Somkaew

Remark :

- LOD : Limit of Detection
- "<" : Lower than LOQ (Limit of Quantitation) / LOR (Limit of Reporting)

Approved by

Wichan Choonharat
Assistant Manager

The above results are valid only for the analyzed/tested sample(s) as indicated in this report. No part of this report or certificate may be reproduced in any form without written consent from the Laboratory. ALS Laboratory Group (Thailand) strongly recommends that this report is not reproduced except in full.

ADDRESS 104 Phatthanakan 40, Phatthanakan Rd., Khwaeng Phatthanakan, Khet Suan Luang, Bangkok 10250 Thailand | PHONE +66 0 2760 3000 | FAX +66 0 2760 3197

ALS LABORATORY GROUP (THAILAND) CO., LTD. An ALS Limited Company

5034-52/ EMAIL

Life Sciences

www.alsglobal.com

RIGHT SOLUTIONS RIGHT PARTNER



Analysis / Test Report

Client : Ratchaburi Power Co., Ltd.
245 Moo 6, Tumbol Bann - Rai, Amphur Damnoen Saduak, Ratchaburi Thailand
70130
P/O : PO220677-2
Project Name : Environmental Testing
Project Location :

Lot ID: 2281704

Date Received : Dec 01, 2022
Date Reported : Dec 10, 2022
Report Number : 2362939-1 Rev. No.1

Page 4 of 5

Sample Number 2281704-6
Sampled Date Nov 30, 2022
Sample Description Noise Dose
Location แม่บ้าน อาคาร ST Block 2 ชั้น 2
Personal Sampling คุณเอลิษา นิ่มนวล
Date Analysis Commenced Dec 01, 2022

| Analyte | Sampled Date/time | Unit | LOD | LOQ (LOR) | Result | Guideline Limit | Method | Guideline | Testing Location |
|---------------------|---------------------|-------|-----|-----------|--------|-----------------|--|-----------|------------------|
| Air Testing | | | | | | | | | |
| Noise Dose (8 hrs.) | 08:30 AM - 04:30 PM | % | - | 1 | 13.5 | No Standard | MOL, Department Labour Protection and Welfare (B.E.2561) | MOL | Bangkok |
| TWA (8 hrs.) | 08:30 AM - 04:30 PM | dB(A) | - | - | 76.3 | 85 | MOL, Department Labour Protection and Welfare (B.E.2561) | MOL | Bangkok |

Guideline :

- MOL : 1. Notification of Department Labour Protection and Welfare on the Criteria and Procedures for Measurement and Analysis of Working Conditions in relation to Heat, Light or Noise Levels, including Duration and Types of Business that must perform (B.E. 2561)
2. Notification of Department of Labour Protection and Welfare on the Standard of Time Weighted Average (TWA) Noise Level (B.E. 2561)

Note : This Analysis test report is reissued to supersede report No 2362939 -1 Reported : Dec 2,2022 due to revise sample information.

Sampled By : Phongsiri Somkaew

Remark :

- LOD : Limit of Detection
- "<" : Lower than LOQ (Limit of Quantitation) / LOR (Limit of Reporting)

Approved by

Wichan Choonharat
Assistant Manager

The above results are valid only for the analyzed/tested sample(s) as indicated in this report. No part of this report or certificate may be reproduced in any form without written consent from the Laboratory. ALS Laboratory Group (Thailand) strongly recommends that this report is not reproduced except in full.

ADDRESS 104 Phatthanakan 40, Phatthanakan Rd., Khwaeng Phatthanakan, Khet Suan Luang, Bangkok 10250 Thailand | PHONE +66 0 2760 3000 | FAX +66 0 2760 3197

ALS LABORATORY GROUP (THAILAND) CO., LTD. An ALS Limited Company

5031-52/EMAIL

Life Sciences

www.alsglobal.com

RIGHT SOLUTIONS RIGHT PARTNER



Analysis / Test Report

Client : Ratchaburi Power Co., Ltd.
245 Moo 6, Tumbol Bann - Rai, Amphur Damnoen Saduak, Ratchaburi Thailand
70130
P/O : PO220677-2
Project Name : Environmental Testing
Project Location :

Lot ID: 2281704

Date Received : Dec 01, 2022
Date Reported : Dec 10, 2022
Report Number : 2362939-1 Rev. No.1

Page 5 of 5

Sample Number 2281704-7
Sampled Date Nov 30, 2022
Sample Description Noise Dose
Location แม่บ้าน อาคาร ST Block 2 ชั้น 3
Personal Sampling คุณนิสา ด้ายขาว
Date Analysis Commenced Dec 01, 2022

| Analyte | Sampled Date/time | Unit | LOD | LOQ (LOR) | Result | Guideline Limit | Method | Guideline | Testing Location |
|---------------------|---------------------|-------|-----|-----------|--------|-----------------|--|-----------|------------------|
| Air Testing | | | | | | | | | |
| Noise Dose (8 hrs.) | 08:30 AM - 04:30 PM | % | - | 1 | 8.9 | No Standard | MOL, Department Labour Protection and Welfare (B.E.2561) | MOL | Bangkok |
| TWA (8 hrs.) | 08:30 AM - 04:30 PM | dB(A) | - | - | 74.5 | 85 | MOL, Department Labour Protection and Welfare (B.E.2561) | MOL | Bangkok |

Guideline :

- MOL : 1. Notification of Department Labour Protection and Welfare on the Criteria and Procedures for Measurement and Analysis of Working Conditions in relation to Heat, Light or Noise Levels, including Duration and Types of Business that must perform (B.E. 2561)
2. Notification of Department of Labour Protection and Welfare on the Standard of Time Weighted Average (TWA) Noise Level (B.E. 2561)

Note : This Analysis test report is reissued to supersede report No 2362939 -1 Reported : Dec 2,2022 due to revise sample information.

Sampled By : Phongsiri Somkaew

Remark :

- LOD : Limit of Detection
- "<" : Lower than LOQ (Limit of Quantitation) / LOR (Limit of Reporting)

Approved by

Wichan Choonharat
Assistant Manager

The above results are valid only for the analyzed/tested sample(s) as indicated in this report. No part of this report or certificate may be reproduced in any form without written consent from the Laboratory. ALS Laboratory Group (Thailand) strongly recommends that this report is not reproduced except in full.

ADDRESS 104 Phatthanakan 40, Phatthanakan Rd., Khwaeng Phatthanakan, Khet Suan Luang, Bangkok 10250 Thailand | PHONE +66 0 2760 3000 | FAX +66 0 2760 3197

ALS LABORATORY GROUP (THAILAND) CO., LTD. An ALS Limited Company

5031-52/ EMAIL

Life Sciences

www.alsglobal.com

RIGHT SOLUTIONS RIGHT PARTNER



Local Area Block 1
(คุณวิชุด ยิ้มอยู่)



Local Area Block 2
(คุณสมนึก ตรีบแสง)



แม่บ้าน อาคาร GT Block 2 ชั้น 1
(คุณอรอนงค์ พุกรอด)



แม่บ้าน อาคาร ST Block 2 ชั้น 2
(คุณอลิษา นิมนวล)



แม่บ้าน อาคาร ST Block 2 ชั้น 3
(คุณนิสา ต่ายขาว)

ภาพแสดงการตรวจวัดระดับเสียงสะสมที่พนักงานได้รับ

ภาคผนวก จ-13

ผลตรวจวิเคราะห์ตะกอนดิน



Analysis / Test Report

Report to : Ratchaburi Power Co., Ltd.
245 Moo 6, Tumbol Bann - Rai, Amphur
Damnoen Saduak, Ratchaburi Thailand
70130
Attn : Pachanee Panitchakuljarus
Phone : 0-3271-9301
Fax : 0-3271-9300
Email : pachanee@rpcl.co.th

Project Name : Water Testing
Location :
P/O :

Lot ID: 1681039
Date Received : Dec 29, 2016
Date Reported : Jan 16, 2017
Report Number : 822671-1 Rev. No.1

Page 1 of 4

Reference Number 1681039-1
Sampling Date Dec 29, 2016
Sample Description ตัวอย่างดินที่ Basin2
Condition of Sample packed in one plastic bag
Date of Analysis Dec 30, 2016

| Analyte | Unit | LOD | Result | Guideline Limit | Method |
|--|-------|-----|--------|-----------------|---|
| Chemical Testing | | | | | |
| Benzo (a) pyrene | mg/kg | - | 0.07 | ≤2.9 | Based on US EPA, Method 8270 |
| Cyanide | mg/kg | - | <0.2 | ≤35 | Based on US EPA, Method 9013 and 9010B |
| PCBs | mg/kg | - | <0.1 | ≤10 | Based on US EPA, Method 3570 and 8082 |
| Metals Testing | | | | | |
| Hexavalent Chromium | mg/kg | - | <1.00 | ≤640 | Based on US EPA, Method 3060A and 7196A |
| Mercury | mg/kg | - | <0.10 | ≤610 | Based on US EPA, Method 7471B |
| Arsenic | mg/kg | - | 3.89 | ≤27 | Based on US EPA, Method 3050B and 6010B |
| Cadmium | mg/kg | - | <0.50 | ≤810 | Based on US EPA, Method 3050B and 6010B |
| Lead | mg/kg | - | 3.93 | ≤750 | Based on US EPA, Method 3050B and 6010B |
| Manganese | mg/kg | - | 42.3 | ≤32000 | Based on US EPA, Method 3050B and 6010B |
| Nickel | mg/kg | - | 2.49 | ≤41000 | Based on US EPA, Method 3050B and 6010B |
| Selenium | mg/kg | - | <0.50 | ≤10000 | Based on US EPA, Method 3050B and 6010B |
| Pesticides | | | | | |
| 2,4-D | mg/kg | - | <0.2 | ≤12000 | Based on US EPA, Method 8270 |
| Pentachlorophenol | mg/kg | - | <0.2 | ≤110 | Based on US EPA, Method 3570 and 8270 |
| Pesticides - Organochlorine Group | | | | | |
| alpha-BHC | mg/kg | - | <0.2 | No Standard | Based on US EPA, Method 3570 and 8081A |
| gamma-BHC | mg/kg | - | <0.2 | No Standard | Based on US EPA, Method 3570 and 8081A |

The above results are valid only for the analyzed/tested sample(s) as indicated in this report. No part of this report or certificate may be reproduced in any form without written consent from the Laboratory. ALS Laboratory Group (Thailand) strongly recommends that this report is not reproduced except in full.

Approved by

Sawitree N.

Sawitree Noisangiam
Assistant Manager



Analysis / Test Report

Report to : Ratchaburi Power Co., Ltd.
245 Moo 6, Tumbol Bann - Rai, Amphur
Damnoen Saduak, Ratchaburi Thailand
70130
Attn : Pachanee Panitchakuljarus
Phone : 0-3271-9301
Fax : 0-3271-9300
Email : pachanee@rpcl.co.th

Project Name : Water Testing
Location :
P/O :

Lot ID: 1681039
Date Received : Dec 29, 2016
Date Reported : Jan 16, 2017
Report Number : 822671-1 Rev. No.1

Page 2 of 4

Reference Number 1681039-1
Sampling Date Dec 29, 2016
Sample Description ตัวอย่างดินที่ Basin2
Condition of Sample packed in one plastic bag
Date of Analysis Dec 30, 2016

| Analyte | Unit | LOD | Result | Guideline Limit | Method |
|--|-------|-----|--------|-----------------|--|
| Pesticides - Organochlorine Group | | | | | |
| beta-BHC | mg/kg | - | <0.2 | No Standard | Based on US EPA, Method 3570 and 8081A |
| delta-BHC | mg/kg | - | <0.2 | No Standard | Based on US EPA, Method 3570 and 8081A |
| Heptachlor | mg/kg | - | <0.2 | ≤5.5 | Based on US EPA, Method 3570 and 8081A |
| Heptachlor and Heptachlor epoxide | mg/kg | - | <0.2 | No Standard | Based on US EPA, Method 3570 and 8081A |
| Heptachlor-Epoxide | mg/kg | - | <0.2 | ≤2.7 | Based on US EPA, Method 3570 and 8081A |
| Chlordane | mg/kg | - | <0.2 | ≤110 | Based on US EPA, Method 3570 and 8081A |
| Mirex | mg/kg | - | <0.2 | No Standard | Based on US EPA, Method 3570 and 8081A |
| Methoxychlor | mg/kg | - | <0.2 | No Standard | Based on US EPA, Method 3570 and 8081A |
| Lindane | mg/kg | - | <0.2 | ≤29 | Based on US EPA, Method 3570 and 8081A |
| Endosulfan | mg/kg | - | <0.2 | No Standard | Based on US EPA, Method 3570 and 8081A |
| Endosulfan I | mg/kg | - | <0.2 | No Standard | Based on US EPA, Method 3570 and 8081A |
| Endosulfan II | mg/kg | - | <0.2 | No Standard | Based on US EPA, Method 3570 and 8081A |
| Endrin | mg/kg | - | <0.2 | No Standard | Based on US EPA, Method 3570 and 8081A |
| Aldrin | mg/kg | - | <0.2 | No Standard | Based on US EPA, Method 3570 and 8081A |
| Dieldrin | mg/kg | - | <0.2 | ≤1.5 | Based on US EPA, Method 3570 and 8081A |
| 2,4-DDD | mg/kg | - | <0.2 | No Standard | Based on US EPA, Method 3570 and 8081A |
| 4,4-DDD | mg/kg | - | <0.2 | No Standard | Based on US EPA, Method 3570 and 8081A |

Approved by

Sawitree N.

Sawitree Noisangiam
Assistant Manager

The above results are valid only for the analyzed/tested sample(s) as indicated in this report. No part of this report or certificate may be reproduced in any form without written consent from the Laboratory. ALS Laboratory Group (Thailand) strongly recommends that this report is not reproduced except in full.

ADDRESS 104 Phatthanakan 40, Phatthanakan Rd., Khwaeng Suan Luang, Khet Suan Luang, Bangkok 10250 Thailand | PHONE +66 0 2715 8700 | FAX +66 0 2715 8799
ALS LABORATORY GROUP (THAILAND) CO., LTD. Part of the ALS Group

Life Sciences

www.alsglobal.com

RIGHT SOLUTIONS RIGHT PARTNER



Analysis / Test Report

Report to : Ratchaburi Power Co., Ltd.
245 Moo 6, Tumbol Bann - Rai, Amphur
Damnoen Saduak, Ratchaburi Thailand
70130
Attn : Pachanee Panitchakuljarus
Phone : 0-3271-9301
Fax : 0-3271-9300
Email : pachanee@rpcl.co.th

Project Name : Water Testing
Location :
P/O :

Lot ID: 1681039
Date Received : Dec 29, 2016
Date Reported : Jan 16, 2017
Report Number : 822671-1 Rev. No.1

Page 3 of 4

Reference Number 1681039-1
Sampling Date Dec 29, 2016
Sample Description ตัวอย่างดินที่ Basin2
Condition of Sample packed in one plastic bag
Date of Analysis Dec 30, 2016

| Analyte | Unit | LOD | Result | Guideline Limit | Method |
|--|-------|-----|--------|-----------------|--|
| Pesticides - Organochlorine Group | | | | | |
| 2,4-DDE | mg/kg | - | <0.2 | No Standard | Based on US EPA, Method 3570 and 8081A |
| 4,4-DDE | mg/kg | - | <0.2 | No Standard | Based on US EPA, Method 3570 and 8081A |
| 2,4-DDT | mg/kg | - | <0.2 | No Standard | Based on US EPA, Method 3570 and 8081A |
| 4,4-DDT | mg/kg | - | <0.2 | No Standard | Based on US EPA, Method 3570 and 8081A |
| DDT | mg/kg | - | <0.2 | ≤120 | Based on US EPA, Method 3570 and 8081A |
| Endrin aldehyde | mg/kg | - | <0.2 | No Standard | Based on US EPA, Method 3570 and 8081A |
| Volatile Organics Compounds | | | | | |
| 1,1,1-Trichloroethane | mg/kg | - | <0.2 | ≤1400 | Based on US EPA, Method 5035 and 8260B |
| 1,1,2-Trichloroethane | mg/kg | - | <0.2 | ≤19 | Based on US EPA, Method 5035 and 8260B |
| 1,1-Dichloroethylene | mg/kg | - | <0.2 | ≤1.2 | Based on US EPA, Method 5035 and 8260B |
| 1,2-Dichloroethane | mg/kg | - | <0.2 | ≤7.6 | Based on US EPA, Method 5035 and 8260B |
| 1,3-Dichloropropane | mg/kg | - | <0.2 | No Standard | Based on US EPA, Method 5035 and 8260B |
| 2-Butanone | mg/kg | - | <0.2 | No Standard | Based on US EPA, Method 5035 and 8260B |
| Benzene | mg/kg | - | <0.05 | ≤15 | Based on US EPA, Method 5035 and 8260B |
| Carbontetrachloride | mg/kg | - | <0.2 | ≤5.3 | Based on US EPA, Method 5035 and 8260B |
| cis-1,2-Dichloroethylene | mg/kg | - | <0.2 | ≤150 | Based on US EPA, Method 5035 and 8260B |
| cis-1,3-Dichloropropene | mg/kg | - | <0.2 | No Standard | Based on US EPA, Method 5035 and 8260B |

Approved by

Sawitree N.

Sawitree Noisangiam
Assistant Manager

The above results are valid only for the analyzed/tested sample(s) as indicated in this report. No part of this report or certificate may be reproduced in any form without written consent from the Laboratory. ALS Laboratory Group (Thailand) strongly recommends that this report is not reproduced except in full.



Analysis / Test Report

Report to : Ratchaburi Power Co., Ltd.

245 Moo 6, Tumbol Bann - Rai, Amphur
Damnoen Saduak, Ratchaburi Thailand
70130

Attn : Pachanee Panitchakuljarus

Phone : 0-3271-9301

Fax : 0-3271-9300

Email : pachanee@rpcl.co.th

Project Name : Water Testing

Location :

P/O :

Lot ID: 1681039

Date Received : Dec 29, 2016

Date Reported : Jan 16, 2017

Report Number : 822671-1 Rev. No.1

Page 4 of 4

Reference Number 1681039-1
Sampling Date Dec 29, 2016
Sample Description ตัวอย่างดินที่ Basin2
Condition of Sample packed in one plastic bag
Date of Analysis Dec 30, 2016

| Analyte | Unit | LOD | Result | Guideline Limit | Method |
|------------------------------------|-------|-----|--------|-----------------|--|
| Volatile Organics Compounds | | | | | |
| Dichloromethane | mg/kg | - | <0.2 | ≤210 | Based on US EPA, Method 5035 and 8260B |
| Ethylbenzene | mg/kg | - | <0.05 | ≤230 | Based on US EPA, Method 5035 and 8260B |
| Styrene | mg/kg | - | <0.2 | ≤1700 | Based on US EPA, Method 5035 and 8260B |
| Tetrachloroethylene | mg/kg | - | <0.2 | ≤190 | Based on US EPA, Method 5035 and 8260B |
| Toluene | mg/kg | - | <0.05 | ≤520 | Based on US EPA, Method 5035 and 8260B |
| Total Xylene | mg/kg | - | <0.2 | ≤210 | Based on US EPA, Method 5035 and 8260B |
| trans-1,2-Dichloroethylene | mg/kg | - | <0.2 | ≤210 | Based on US EPA, Method 5035 and 8260B |
| trans-1,3-Dichloropropene | mg/kg | - | <0.2 | No Standard | Based on US EPA, Method 5035 and 8260B |
| Trichloroethylene | mg/kg | - | <0.2 | ≤61 | Based on US EPA, Method 5035 and 8260B |
| Vinyl chloride | mg/kg | - | <0.2 | ≤8.3 | Based on US EPA, Method 5035 and 8260B |

Guideline: Notification of National Environmental Board No. 25, B.E. 2547 (2004) issued under the Enhancement and Conservation of National Environmental Quality Act B.E.2535 (1992) published in the Royal Government Gazette No. 121 Special Part 119 D dated October 20, B.E.2547 (Soil Quality Standard for Other Purposes)

Note:

This Analysis test report is reissued to supersede report no. 822671-1, Date Reported : Jan 13, 2016

Remark :

1. LOD : Limit of Detection
2. "<" : Lower than LOQ (Limit of Quantitation)

Approved by

Sawitree N.

Sawitree Noisangiam
Assistant Manager

The above results are valid only for the analyzed/tested sample(s) as indicated in this report. No part of this report or certificate may be reproduced in any form without written consent from the Laboratory. ALS Laboratory Group (Thailand) strongly recommends that this report is not reproduced except in full.

ADDRESS 104 Phatthanakan 40, Phatthanakan Rd., Khwaeng Suan Luang, Khet Suan Luang, Bangkok 10250 Thailand | PHONE +66 0 2715 8700 | FAX +66 0 2715 8799
ALS LABORATORY GROUP (THAILAND) CO., LTD. Part of the ALS Group

Life Sciences

www.alsglobal.com

RIGHT SOLUTIONS RIGHT PARTNER

ภาคผนวก ฉ

แผนการบำรุงรักษาเครื่องจักรกลของโรงไฟฟ้า

[illegible]

CI Combustion Inspection
MO Major Overhaul

MI Minor inspection

ภาคผนวก ช-1

สำเนาหนังสือชี้แจงการติดตั้งอุปกรณ์ดูดซับเสียงของ
เครื่องกั้นหันไอน้ำแบบถาวร
ทดแทนการใช้อุปกรณ์ดูดซับเสียงแบบเคลื่อนที่



บริษัท ราชบุรีเพาวเวอร์ จำกัด
Ratchaburi Power Co., Ltd.

1828 ถนนสุขุมวิท แขวงบางนาพรโอม กรุงเทพฯ 10260 โทร. 0-2311-5111 แฟกซ์ : 0-2332-3882
1828 Sukhumvit Rd., Bangchak Phrakonong Bangkok 10260 Tel. 0-2311-5111 Fax : 0-2332-3882

๒๗๘.

วันที่ 29 มีนาคม 2553

เรื่อง การดำเนินการตามมาตรการป้องกันและแก้ไขผลกระทบสิ่งแวดล้อม

เรียน อุตสาหกรรมจังหวัดราชบุรี

สิ่งที่ส่งมาด้วย

1. ภาพแสดงการใช้อุปกรณ์ดูดซับเสียงแบบเคลื่อนที่ขณะทำความสะอาดเครื่องกังหันไอน้ำ
2. ภาพแสดงอุปกรณ์ดูดซับเสียงแบบถาวรที่ติดตั้งในโรงไฟฟ้า
3. รายงานผลการตรวจวัดคุณภาพเสียงรอบโรงไฟฟ้า
4. ภาพแสดงป้ายเตือนการสวมใส่อุปกรณ์ป้องกันส่วนบุคคลก่อนเข้าพื้นที่

อ้างถึง หนังสือ รบ. 0028(3)/ว. 00540 ลงวันที่ 19 มีนาคม 2553 เรื่อง ให้ดำเนินการเป็นไปตามมาตรการป้องกันและแก้ไขผลกระทบสิ่งแวดล้อม โดยผลการตรวจสอบแจ้งว่าทางบริษัทยังไม่ได้ดำเนินการติดตั้งอุปกรณ์ดูดซับเสียงแบบเคลื่อนที่ขณะทำความสะอาดเครื่องกังหันไอน้ำสำหรับเตรียมการเดินเครื่องนั้น บริษัทฯ ขอเรียนชี้แจงดังนี้

อุปกรณ์ดูดซับเสียงแบบเคลื่อนที่เป็นอุปกรณ์ชั่วคราวที่เหมาะสมสำหรับการติดตั้งใช้งานในระยะก่อสร้าง และช่วงทดสอบการเดินเครื่อง เพื่อลดผลกระทบด้านเสียงขณะทำความสะอาดท่อไอน้ำของเครื่องกังหันไอน้ำ ซึ่งทางบริษัทฯ ได้ทำการติดตั้งขณะทำความสะอาดท่อน้ำดังกล่าวเป็นที่เรียบร้อยแล้วในช่วงการก่อสร้าง และช่วงทดสอบการเดินเครื่องดังแสดงในเอกสารแนบ 1

ทั้งนี้ เพื่อเป็นการป้องกันผลกระทบด้านเสียงจากการเดินเครื่องของโรงไฟฟ้าในระยะดำเนินการ บริษัทฯ ได้ติดตั้งอุปกรณ์ดูดซับเสียงของเครื่องกังหันไอน้ำแบบถาวร ทดแทนการใช้อุปกรณ์ดูดซับเสียงแบบเคลื่อนที่ ซึ่งมีความเหมาะสมในการใช้งานมากกว่า โดยติดตั้งมาตั้งแต่เริ่มดำเนินการเมื่อวันที่ 1 มีนาคม 2551 ดังแสดงในเอกสารแนบ 2 ซึ่งผลการตรวจวัดคุณภาพเสียง ตั้งแต่เริ่มดำเนินการตามมาตรการติดตามตรวจสอบพบว่า คุณภาพเสียงรอบโรงไฟฟ้าอยู่ในเกณฑ์มาตรฐานมาโดยตลอดดังแสดงในเอกสารแนบ 3

อนึ่งตามที่มีผลการตรวจวัดระดับเสียงในสถานประกอบการเกินค่ามาตรฐานในบางจุดนั้น ทางบริษัทฯ ขอเรียนชี้ว่า ระดับเสียงในบางพื้นที่ของโรงไฟฟ้าอาจมีค่าเกิน 90 dB(A) ซึ่งเป็นค่ามาตรฐานกำหนดเพื่อป้องกันไม่ให้ถูกจ้างต้องสัมผัสระดับเสียงดังกล่าวเกิน 8 ชั่วโมงต่อวัน แต่เนื่องจากพื้นที่ดังกล่าวอยู่ภายในอาคาร ซึ่งเป็นที่รวมของเครื่องจักร และไม่มีพนักงาน หรือเจ้าหน้าที่ในโรงไฟฟ้าปฏิบัติงานเป็นการประจำ เครื่องจักรดังกล่าวถูกควบคุมโดยระบบควบคุมอัตโนมัติจากห้องควบคุม ทางบริษัทจึงได้กำหนดมาตรการป้องกันโดยให้ผู้ปฏิบัติงานที่ต้องเข้าไปในพื้นที่ดังกล่าวในกรณีจำเป็น ต้องสวมใส่อุปกรณ์ป้องกันเสียง และได้ติดตั้งป้ายเตือนบริเวณทางเข้าเพื่อบังคับให้นุคคลที่เข้าไปในพื้นที่ต้องสวมใส่อุปกรณ์ป้องกันอันตรายส่วนบุคคลก่อนเข้าบริเวณดังกล่าว ดังแสดงในเอกสารแนบ 4

ขอแสดงความนับถือ



(นายสำคัญ รัศมีบรรจงกิจ)

กรรมการผู้จัดการ



Ratchaburi Power Co.,Ltd.

บริษัท ราชบุรีพาวเวอร์ จำกัด

RPCL Site - Working Progress

Project: 2x700MW Gas Fired Power Plant

Period: October 29 - November 3, 2007

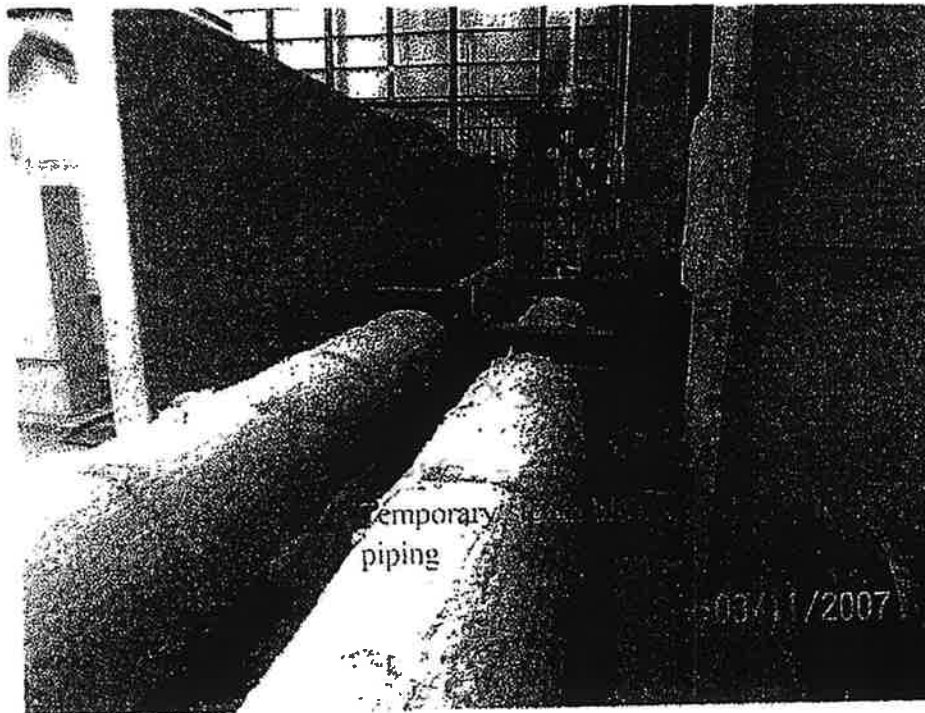


RPCL Site - Working Progress

Ratchaburi Power Co.,Ltd.

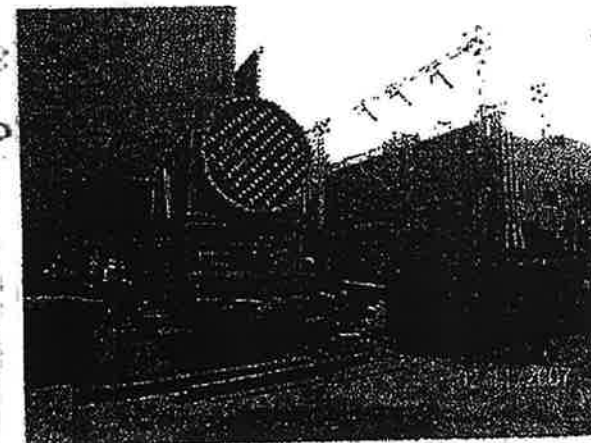
บริษัท ราชบุรีเอนเนอร์จี้ จำกัด

ST Bldg B#1



HIP/LP Turbine & STG 10

- Completed coupling between LP-HIP.
- Under install insulation of HIP Turbine.
- Under install the temporary steam blow piping and silencer.





Ratchaburi Power Co.,Ltd.

บริษัท ราชบุรีเอนเนอร์จี้ จำกัด

RPCL Site - Working Progress

Project: 2x700MW Gas Fired Power Plant

Period time : 26-November - 1-December 2007.

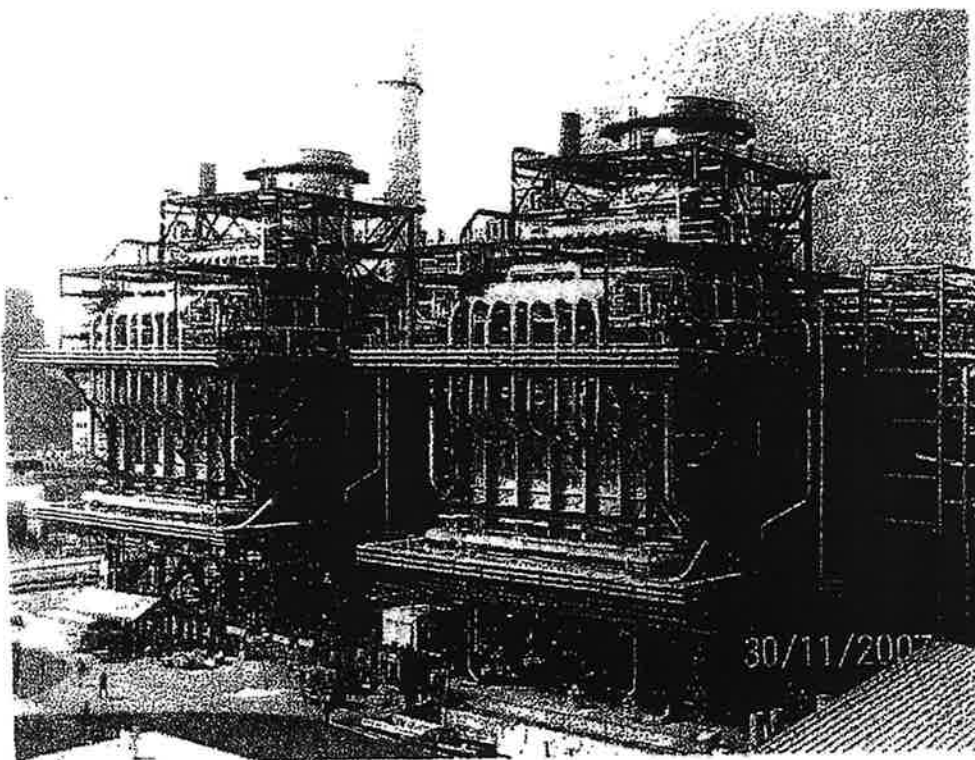


RPCL Site - Working Progress

Ratchaburi Power Co.,Ltd.

บริษัท ราชบุรีพาวเวอร์ จำกัด

HRSG 11 & 12



HRSG 11

- Completes steam blow during 8-11 Nov 07.
- Insulation , painting work, punch item almost was completed.
- Safety Valve test will be done on 3-5 Dec 07.

HRSG 12

- Completes steam blow during 19-22 Nov 07.
- Insulation , painting work, punch item almost was completed.
- Safety Valve test will be done on 6-8 Dec 07.



Ratchaburi Power Co.,Ltd.

บริษัท ราชบุรีเอนเนอร์จี้ จำกัด

RPCL Site - Working Progress

Project: 2x700MW Gas Fired Power Plant

Period: January 6-19, 2008



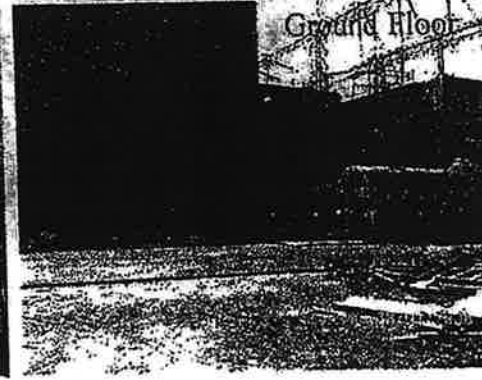
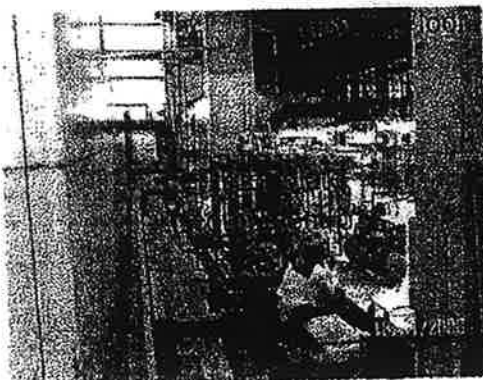
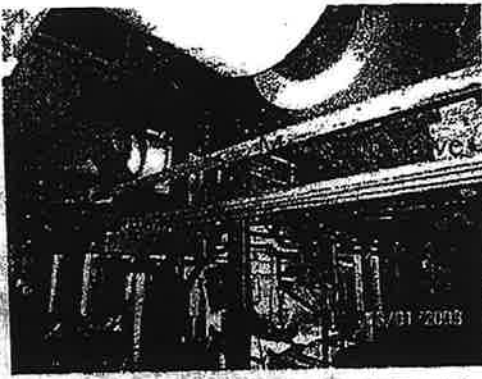
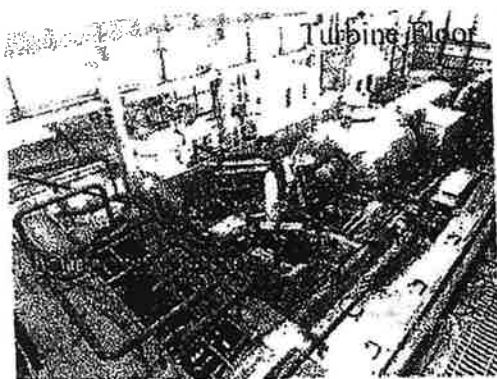


RPCL Site - Working Progress

Ratchaburi Power Co.,Ltd.

บริษัท ราชบุรีพาวเวอร์ จำกัด

ST Building B#2



ST Building B#2

Mechanical work

- Insulation work for main steam pipe and main stop valve.
- Completed coupling between LP to HIP &STG.
- Under install temporary piping for steam blow & silencer.
- Under installation enclosure panel.



Ratchaburi Power Co.,Ltd.

บริษัท ราชบุรีเอนเนอร์จี้ จำกัด

RPCL Site - Working Progress

Project: 2x700MW Gas Fired Power Plant

Period: January 20 - February 2, 2008



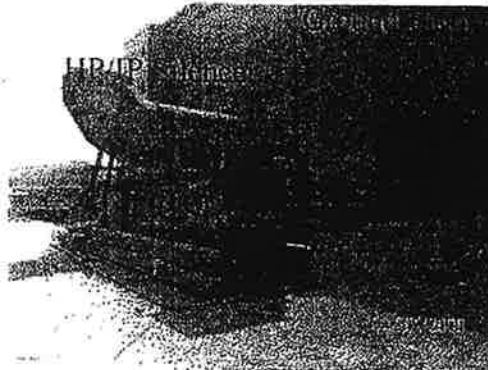
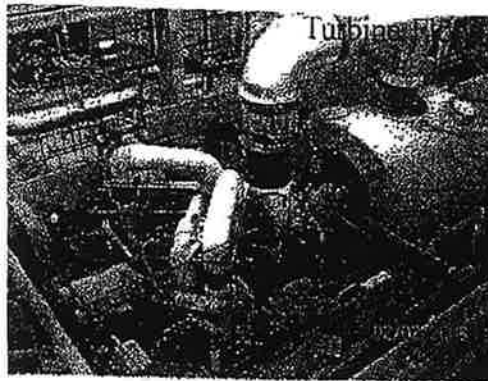


RPCL Site - Working Progress

Ratchaburi Power Co.,Ltd.

บริษัท ราชบุรีพาวเวอร์ จำกัด

ST Buidling B#2



ST Building B#2

Mechanical work

- Under install the temporary piping for steam blow.
- Installation enclosure panel & insulation of crossover pipe.



Ratchaburi Power Co.,Ltd.

บริษัท ราชบุรีพาวเวอร์ จำกัด

RPCL Site - Working Progress

Project: 2x700MW Gas Fired Power Plant

Period: February 3-16, 2008

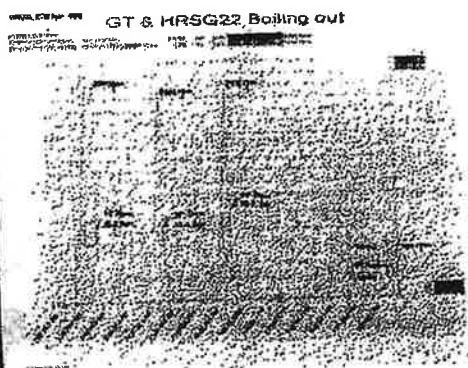
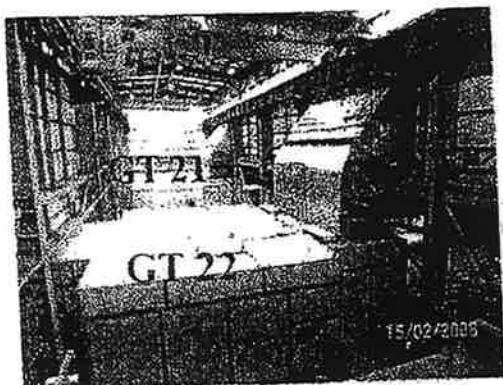


RPCL Site - Working Progress

Ratchaburi Power Co.,Ltd.

บริษัท ราชบุรีพาวเวอร์ จำกัด

GT Building B#2

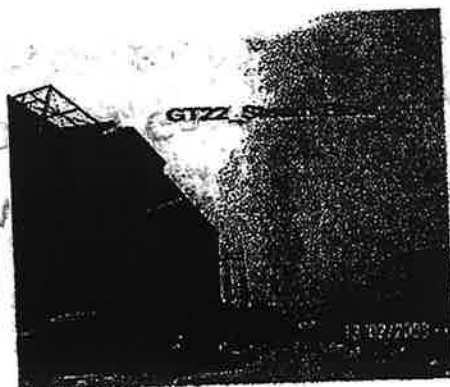


GT21

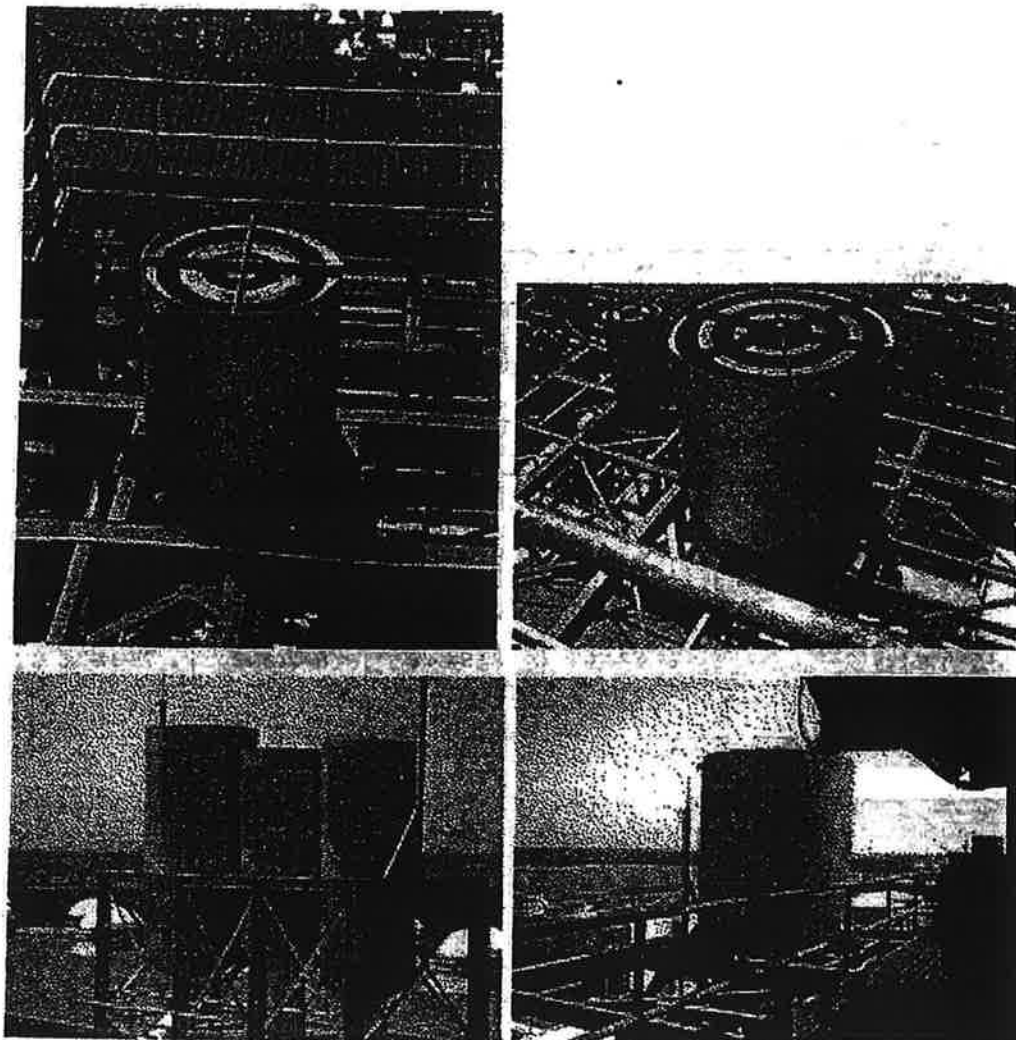
- GT21 was firing on January 25, 2008.
- GT21 was completed Steam Blow on February 10, 2008.
- GT21 First Synch will be on February 24, 2008.

GT22

- GT22 was first firing on February 1, 2008
- GT22 was completed Steam Blow on February 14, 2008.
- GT22 First Synch will be on February 28, 2008.



การติดตั้งอุปกรณ์ดูดซับเสียงแบบถาวรที่บริเวณปลายท่อของทุกลู่อุปกรณ์ที่ก่อให้เกิดเสียงดัง



โรงไฟฟ้าราชบุรีเพาเวอร์

รายงานผลการปฏิบัติตามมาตรการป้องกันและแก้ไขผลกระทบสิ่งแวดล้อม และมาตรการติดตามตรวจสอบ
คุณภาพสิ่งแวดล้อม ฉบับที่ 9 (กรกฎาคม-ธันวาคม 2552)

ภาคผนวก ณ.

ตาราง ณ-8 ผลการตรวจวัดระดับเสียงโรงไฟฟ้าราชบุรีเพาเวอร์ (ปี 2549-ปี 2552)

ค่าระดับเสียงเฉลี่ย 24 ชั่วโมง

| จุดตรวจวัด | ปี 2549 | ปี 2550 | ปี 2551 | ปี 2552 |
|--------------------------------|-----------|-----------|-----------|-----------|
| ที่ตั้งโรงไฟฟ้าราชบุรีเพาเวอร์ | 56.5-60.9 | 57.2-61.0 | 61.8-65.1 | 63.5-64.6 |
| ที่ตั้งโรงไฟฟ้าราชบุรี | 59.8-61.6 | 57.7-61.2 | 59.0-62.7 | 57.5-62.5 |
| บ้านชาวเหนือ | 51.4-56.7 | 52.0-56.3 | 56.6-62.3 | 58.7-61.0 |
| บ้านสามเรือน | 48.4-58.4 | 53.3-56.7 | 54.3-61.4 | 52.9-57.1 |
| มาตรฐาน | 70 | | | |

ค่าระดับเสียงสูงสุด

| จุดตรวจวัด | ปี 2549 | ปี 2550 | ปี 2551 | ปี 2552 |
|--------------------------------|-----------|-----------|-----------|-----------|
| ที่ตั้งโรงไฟฟ้าราชบุรีเพาเวอร์ | 86.2-97.3 | 90.3-96.7 | 93.4-97.8 | 87.6-93.4 |
| ที่ตั้งโรงไฟฟ้าราชบุรี | 78.4-89.4 | 87.6-92.4 | 89.5-92.7 | 85.6-92.5 |
| บ้านชาวเหนือ | 83.1-89.7 | 82.4-85.4 | 82.4-95.2 | 86.2-92.6 |
| บ้านสามเรือน | 87.9-93.9 | 82.5-84.6 | 84.7-93.5 | 78.3-92.8 |
| มาตรฐาน | 115 | | | |

ค่าระดับการรบกวน

| จุดตรวจวัด | ปี 2549 | ปี 2550 | ปี 2551 | ปี 2552 |
|--------------------------------|---------|---------|---------|---------|
| ที่ตั้งโรงไฟฟ้าราชบุรีเพาเวอร์ | 2.4-8.1 | 3.4-9.3 | 3.6-8.7 | 6.7-9.5 |
| ที่ตั้งโรงไฟฟ้าราชบุรี | 2.0-6.0 | 1.9-5.3 | 2.5-7.9 | 2.8-8.9 |
| บ้านชาวเหนือ | 1.4-7.9 | 2.7-7.9 | 2.5-6.8 | 3.3-8.8 |
| บ้านสามเรือน | 3.9-7.6 | 4.2-8.7 | 2.0-6.1 | 2.2-7.7 |
| มาตรฐาน | 10 | | | |

หมายเหตุ: มาตรฐานระดับเสียง ตามประกาศกระทรวงอุตสาหกรรม เรื่อง กำหนดค่าระดับเสียงรบกวนและระดับเสียงที่
เกิดจากการประกอบกิจการโรงงาน พ.ศ.2548



บริษัท ราชบุรีเพาเวอร์ จำกัด
Ratchaburi Power Co., Ltd.

ป้ายเตือนความปลอดภัยที่ติดตั้งบริเวณด้านหน้าทางเข้าพื้นที่ของกระบวนการผลิต

